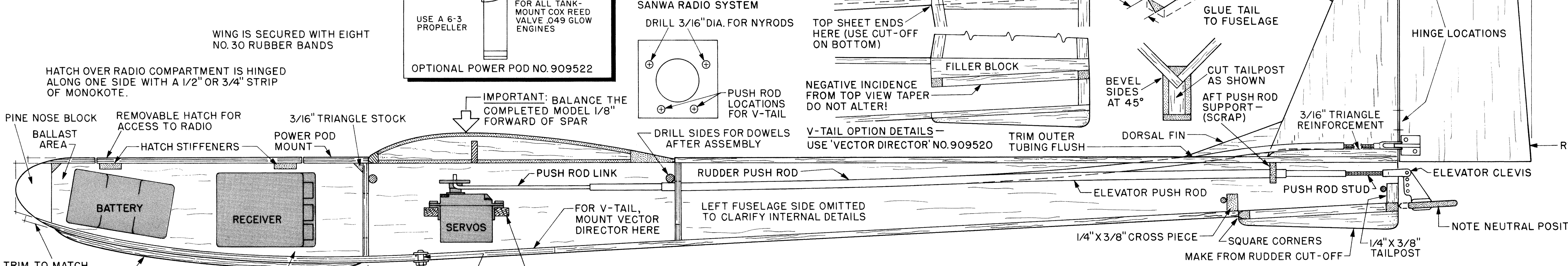
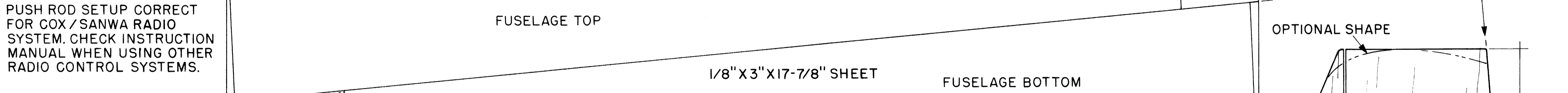
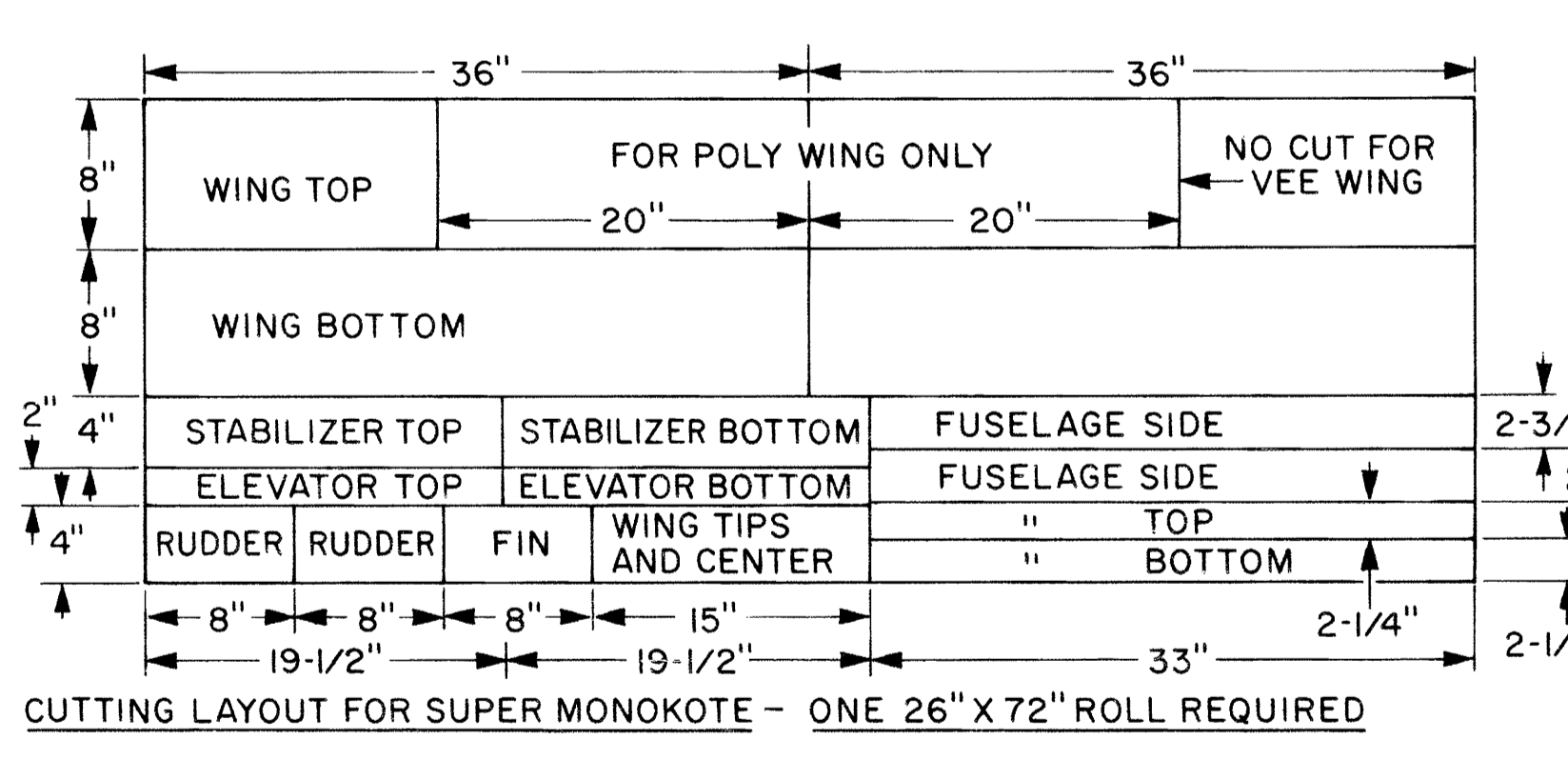
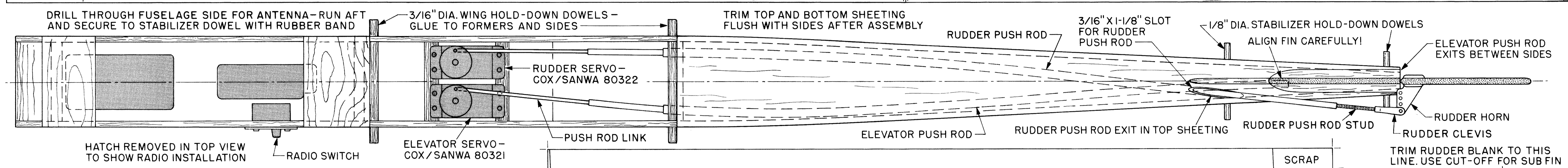
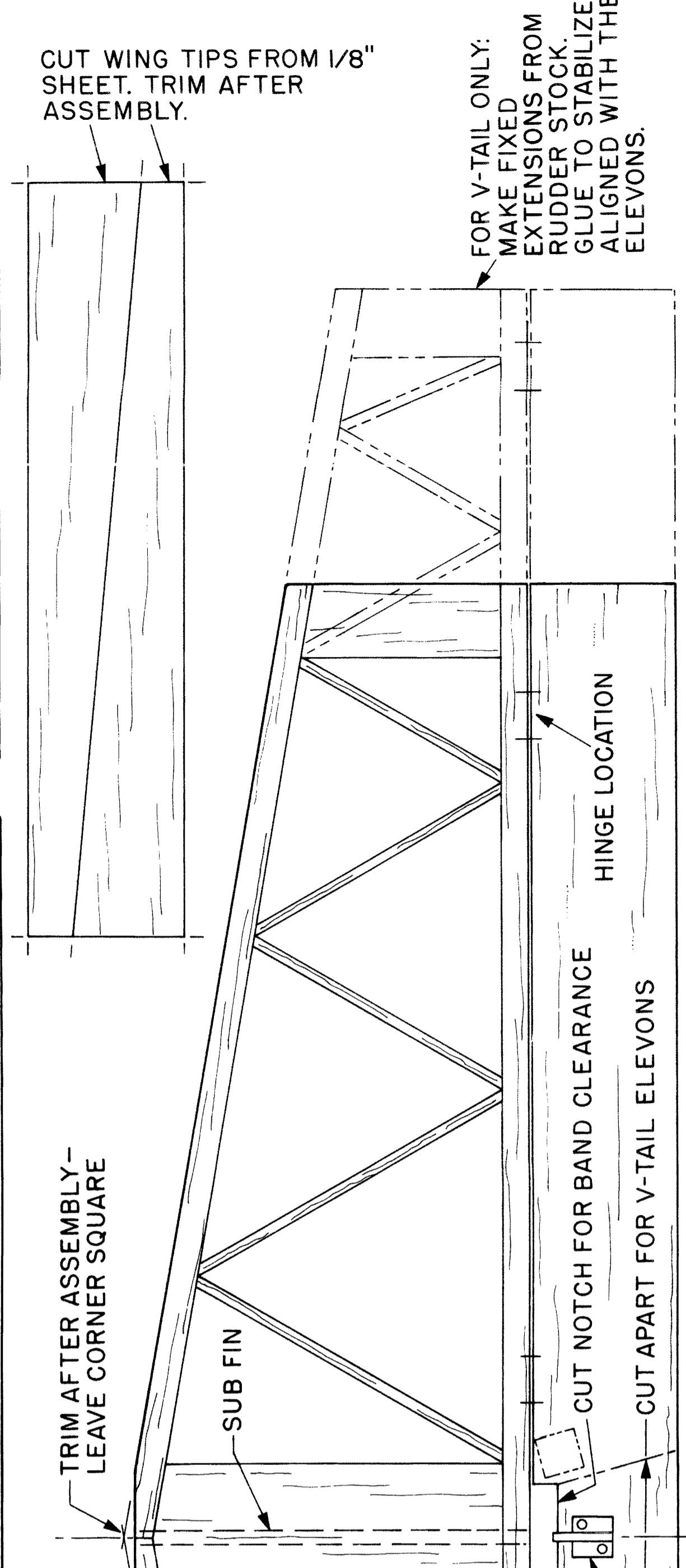
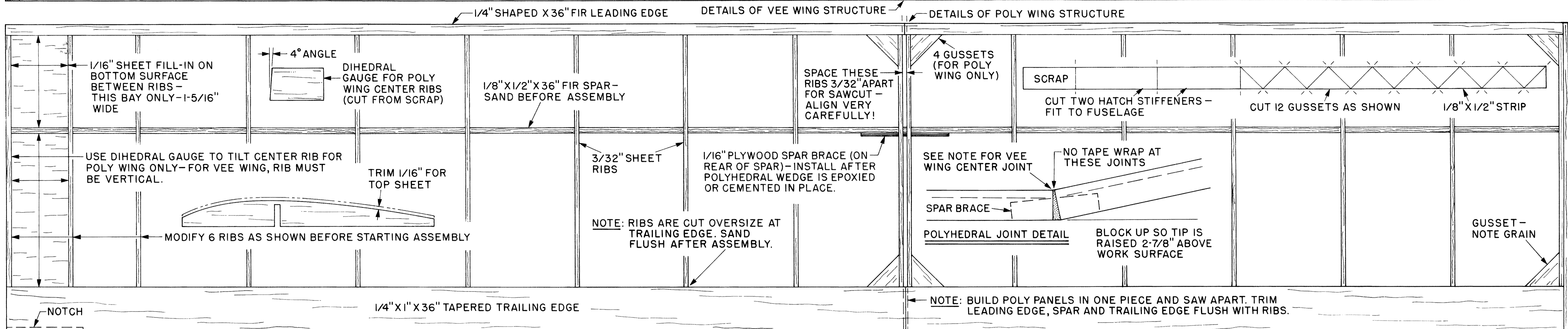
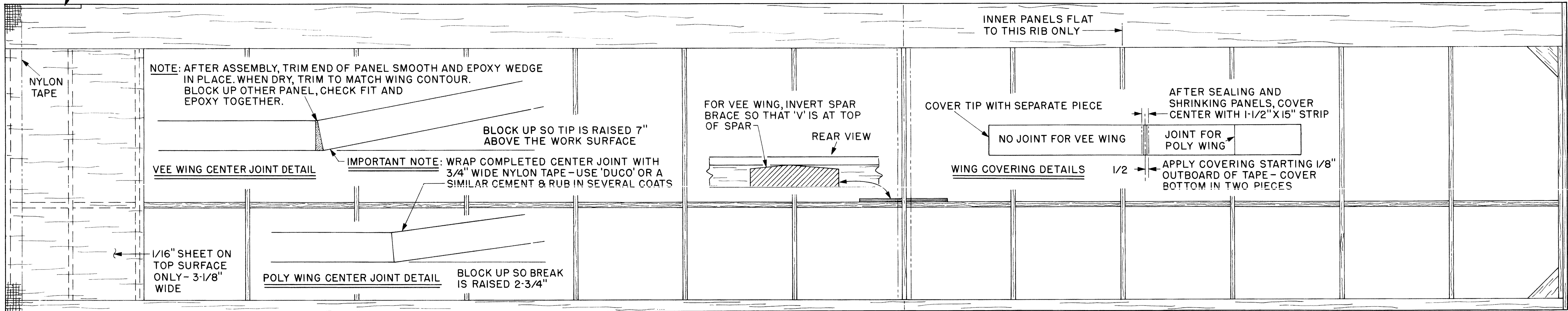


IMPORTANT NOTE: AFTER COVERING WING, TWIST TIP PANELS SO THAT THE TRAILING EDGE IS RAISED 1/4" HIGHER THAN THE LEADING EDGE AND RE-SHRINK COVERING (MEASURED AT TIP RIB). BE SURE BOTH PANELS HAVE THE SAME AMOUNT OF TWIST (WASHOUT).

AFTER JOINING PANELS, NOTCH TRAILING EDGE FOR .070" X 3.5" WIRE REINFORCEMENT. BEND WIRE TO MATCH ANGLE, EPOXY IN PLACE, THEN WRAP JOINT.



SQUARE SOAR 72