

IMPORTANT NOTES:

- 1.- FUSELAGE IS FABRICATED WITH EPOXY RESIN. USE ONLY EPOXY GLUES FOR ASSEMBLY. DO NOT USE POLYESTER RESIN!
- 2- DO NOT SAND OUTSIDE OF FUSELAGE UNTIL ASSEMBLY IS COMPLETED, AS THE TRANSLUCENT SURFACE AIDS IN POSITIONING INTERNAL STRUCTURE.
- 3- WASH INSIDE OF FUSELAGE WITH ACETONE BEFORE INSTALLING INTERNAL STRUCTURE.

NOTE:
PRE-ASSEMBLE ELEVATOR PUSH ROD AND HORN OUTSIDE OF FUSELAGE, INSERT THROUGH FUSELAGE. USE PIN FOR ALIGNMENT AND INSTALL PIVOT TUBE

CONTROL SURFACE MOVEMENT

RUDDER ± 1" MEASURED AT L.E. OF FIN.

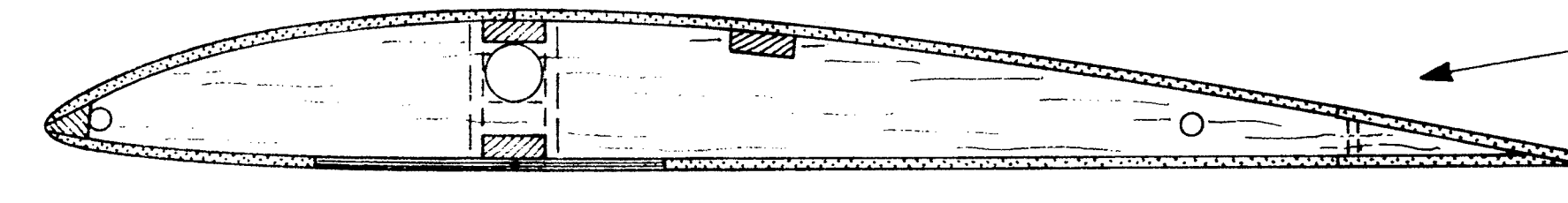
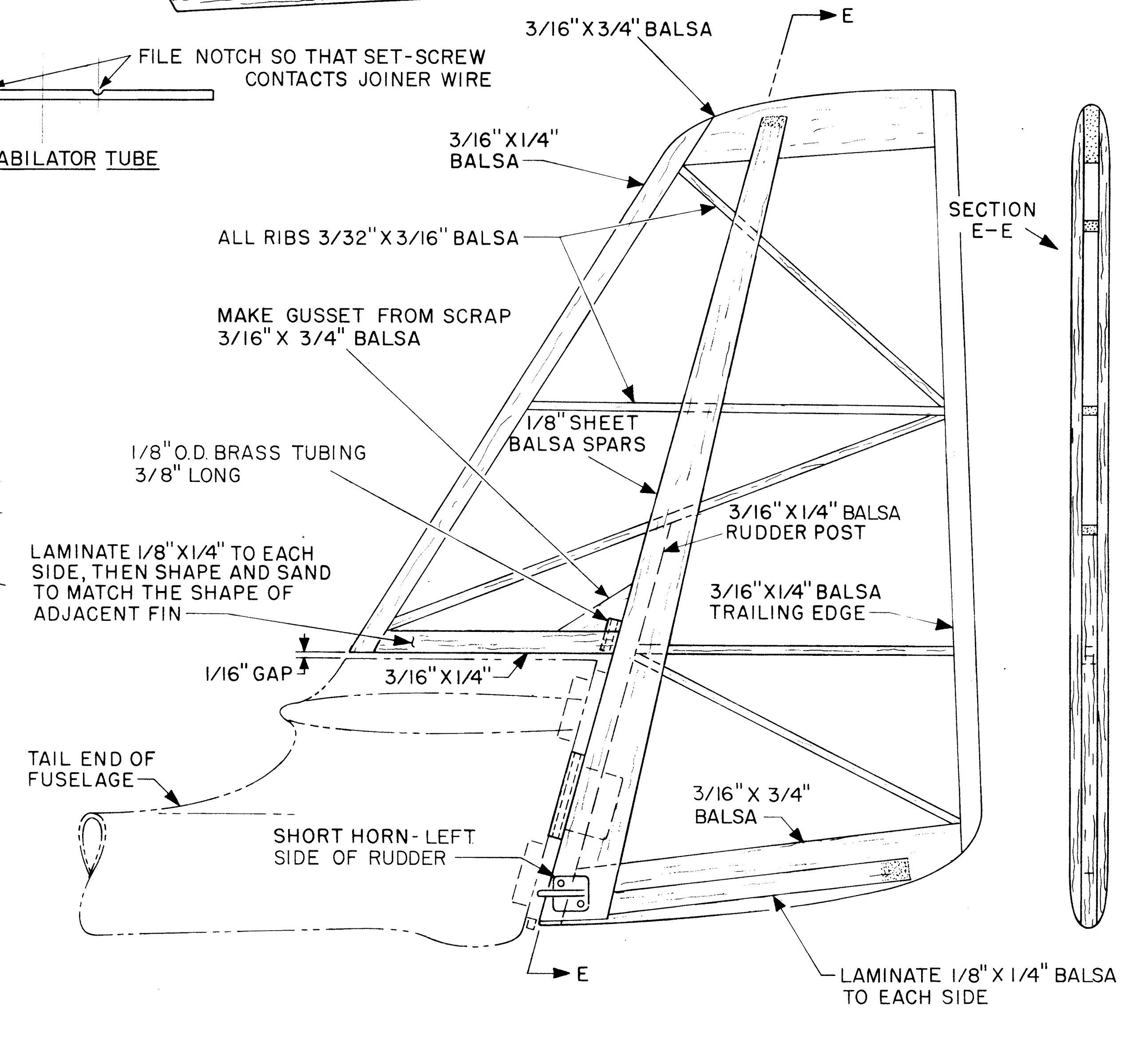
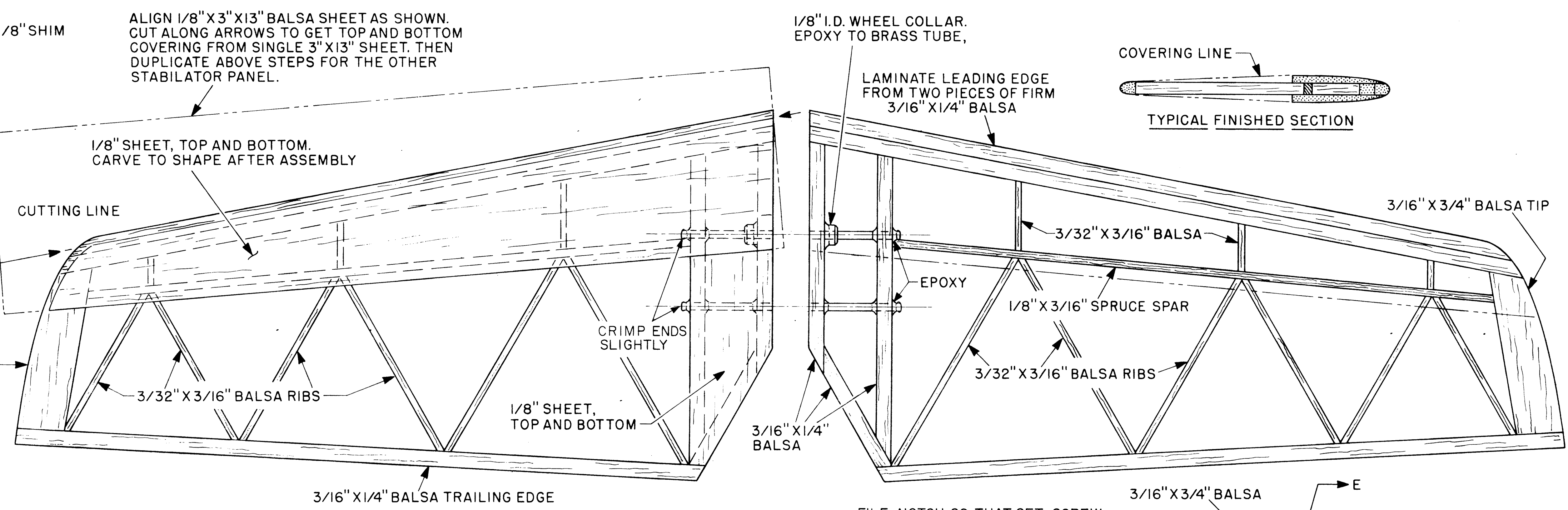
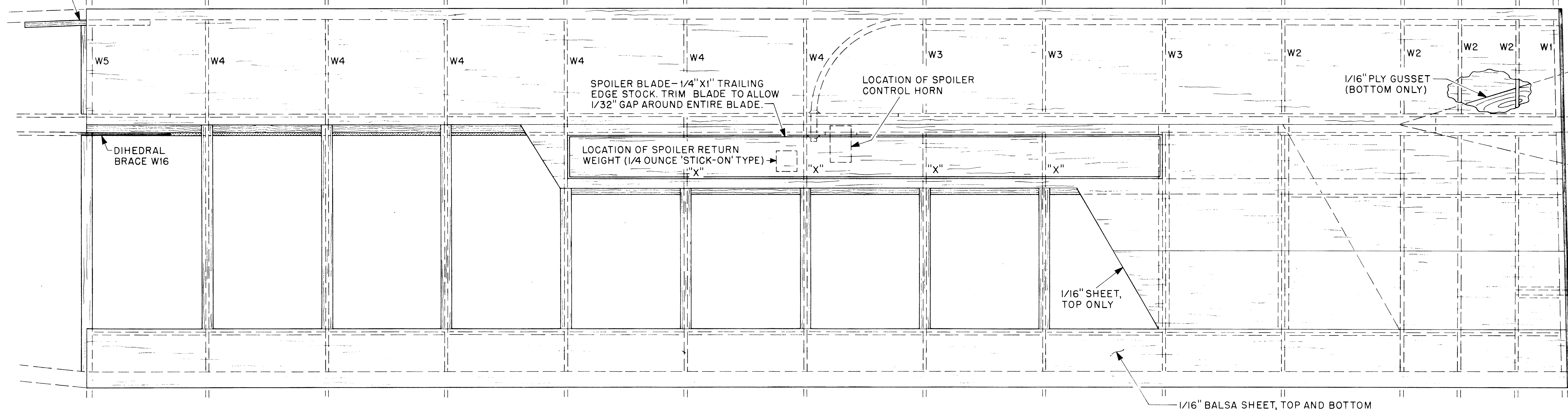
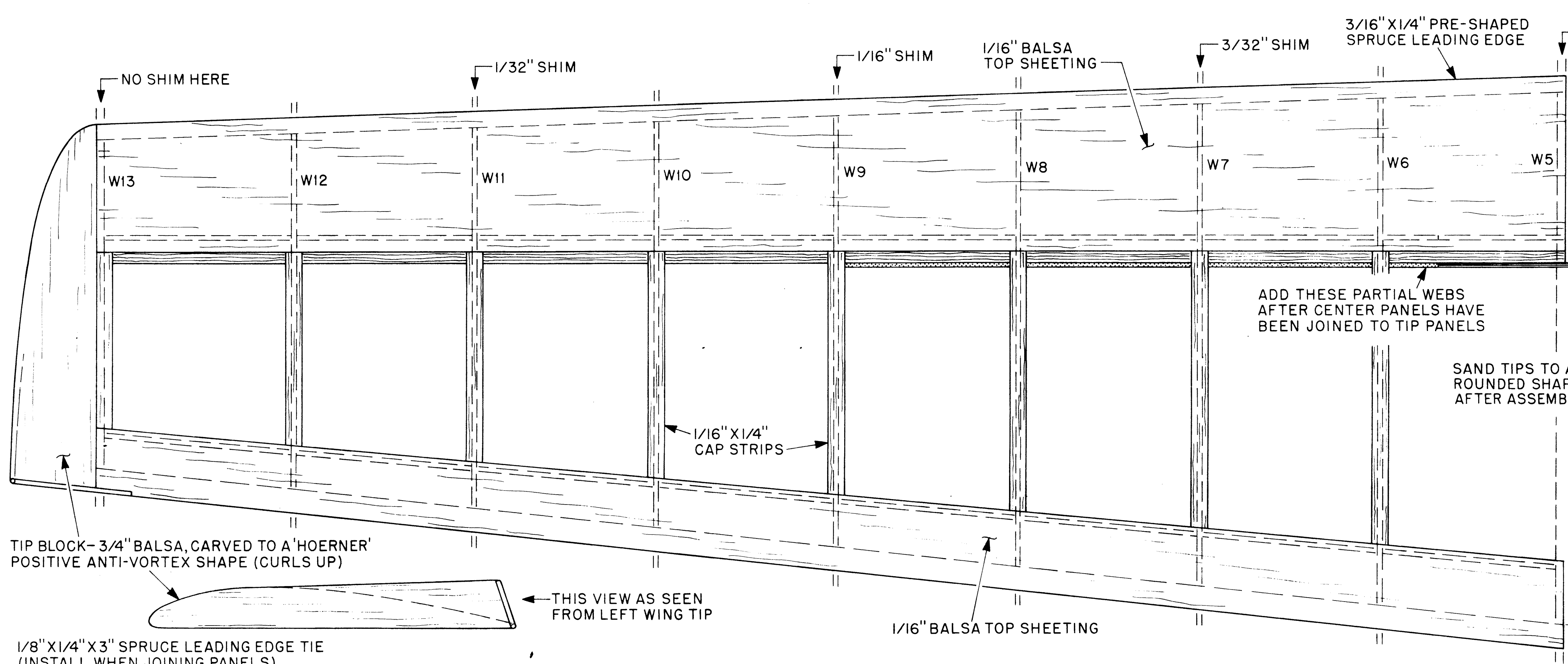
STABILATOR ± 1/2"-5/8" MEASURED AT WIDEST POINT AT T.E.

WING AREA: 1000 SQ. INCHES EFFECTIVE
 FLYING WEIGHT: 64 - 70 OZ. UNBALLASTED
 WING LOADING: 9.3-10 OZ./SQ. FOOT

AQUILA GRANDÉ

DESIGNED BY LEE RENAUD PLANS BY PAUL PLECAN





TYPICAL WING CROSS SECTION - ALSO SHOWS W1 RIB (2 REQUIRED) 1/8" Balsa SHEET

AQUILA GRANDÉ

AIRTRONICS quality PLUS performance