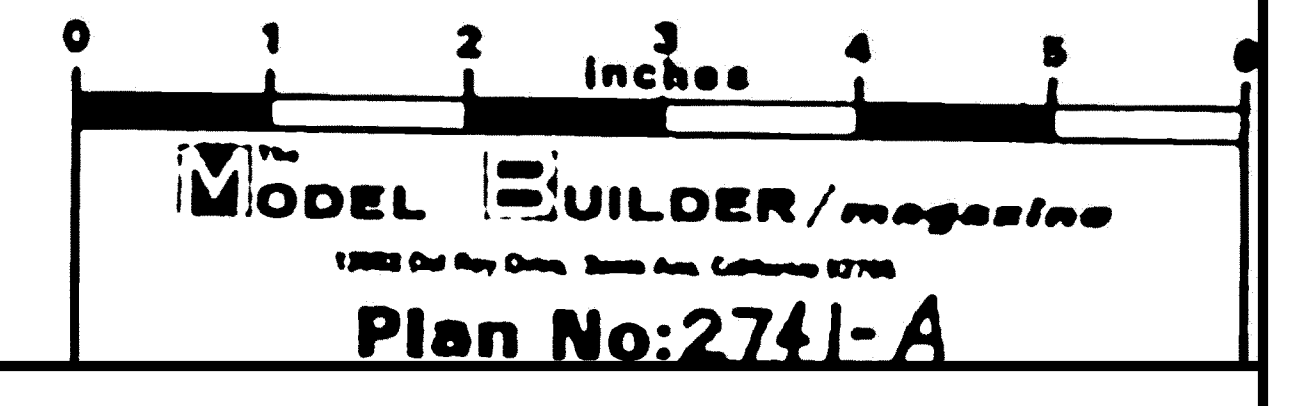
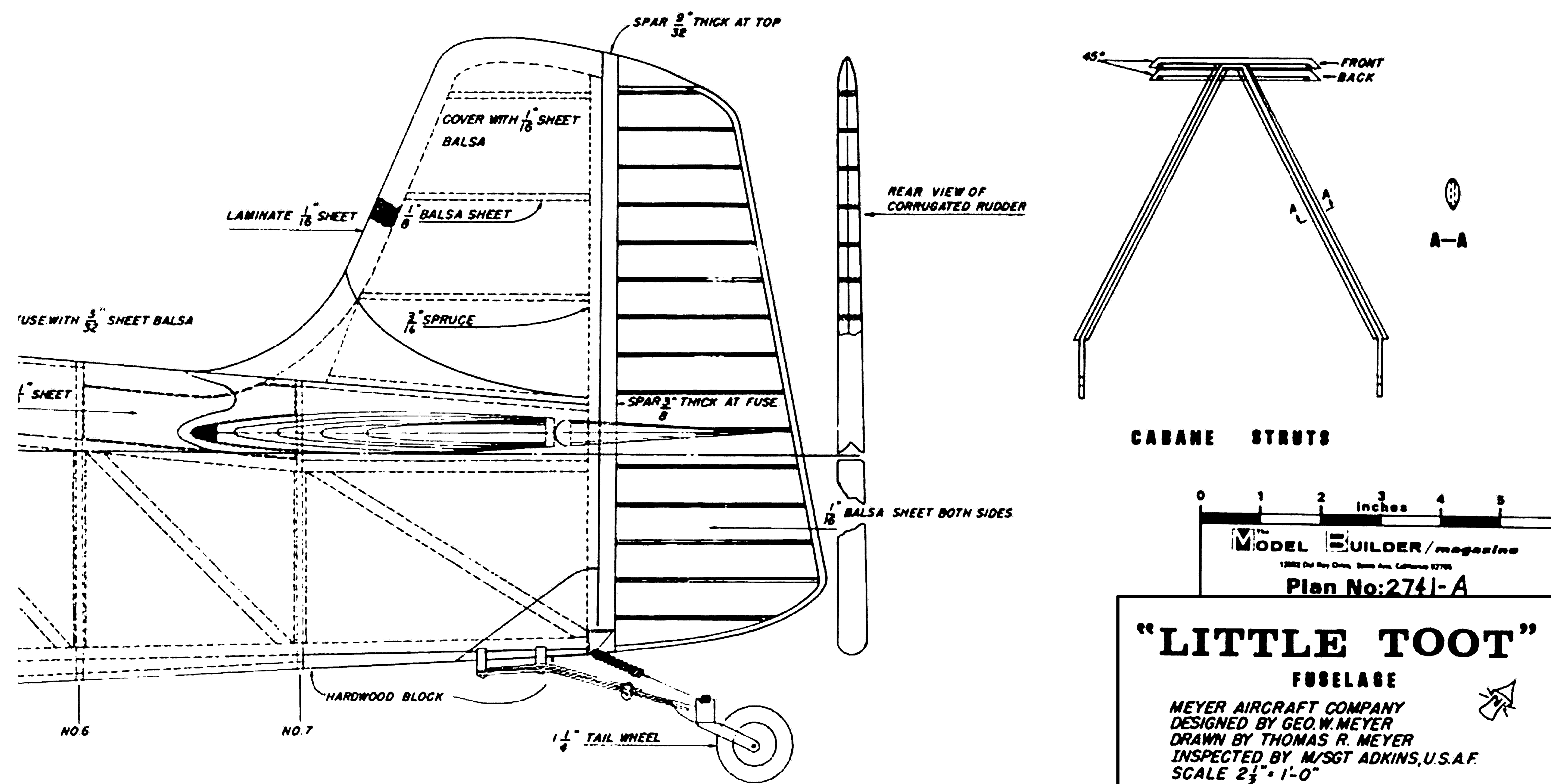
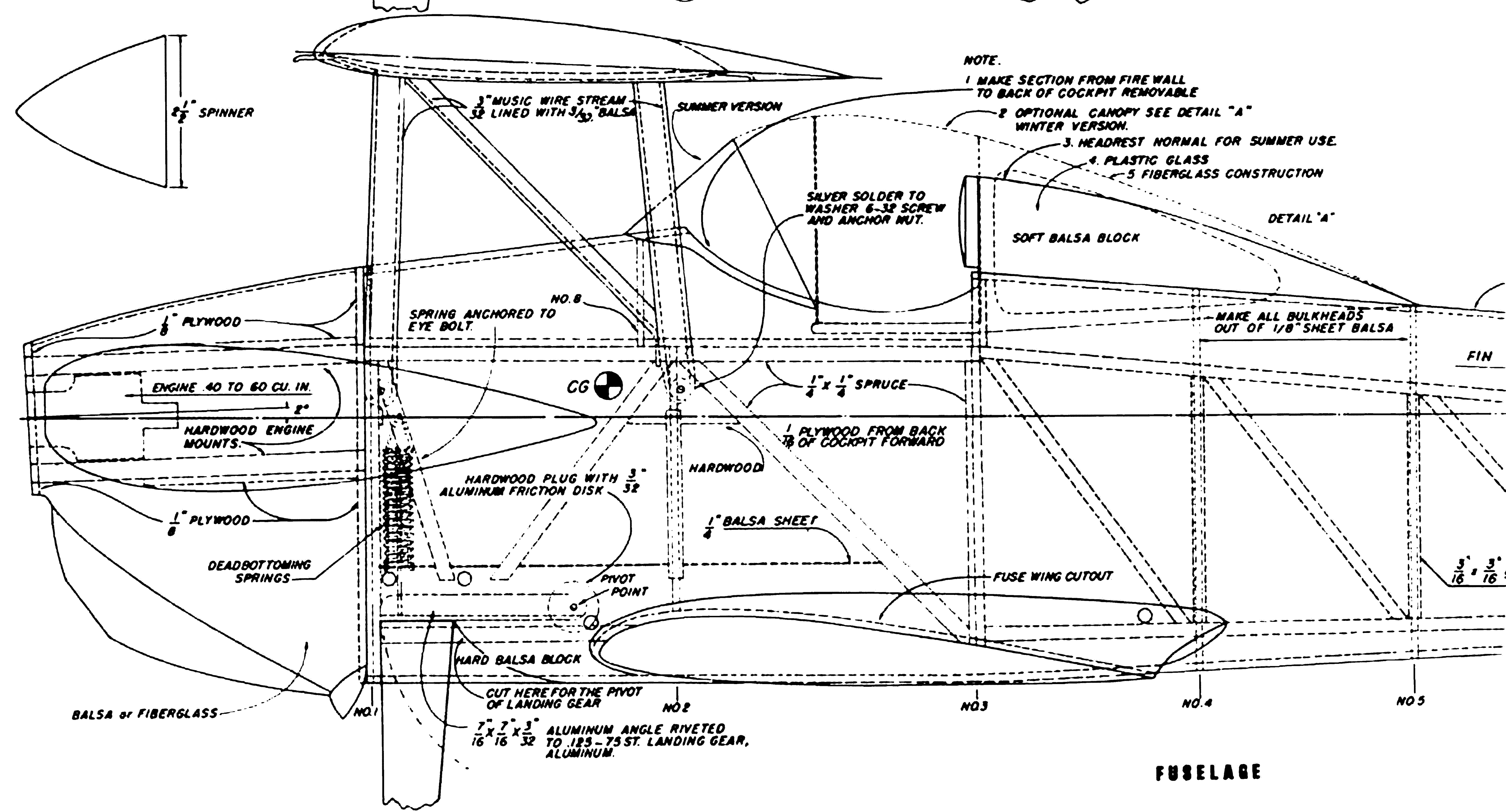


"LITTLE TOOT"



"LITTLE TOOT"
FUSELAGE

MEYER AIRCRAFT COMPANY
DESIGNED BY GEO. W. MEYER
DRAWN BY THOMAS R. MEYER
INSPECTED BY M/SGT ADKINS, U.S.A.F.
SCALE 2 1/2" = 1'-0"

THESE DRAWINGS ARE NOT TO BE COPIED WITHOUT THE VERBAL OR WRITTEN PERMISSION OF OWNER AND PRESIDENT OF "MEYER AIRCRAFT COMPANY"

DESIGNERS SIGNATURE *George W. Meyer*
INSPECTOR SIGNATURE *Thomas R. Meyer*

BWG. NO. 500

