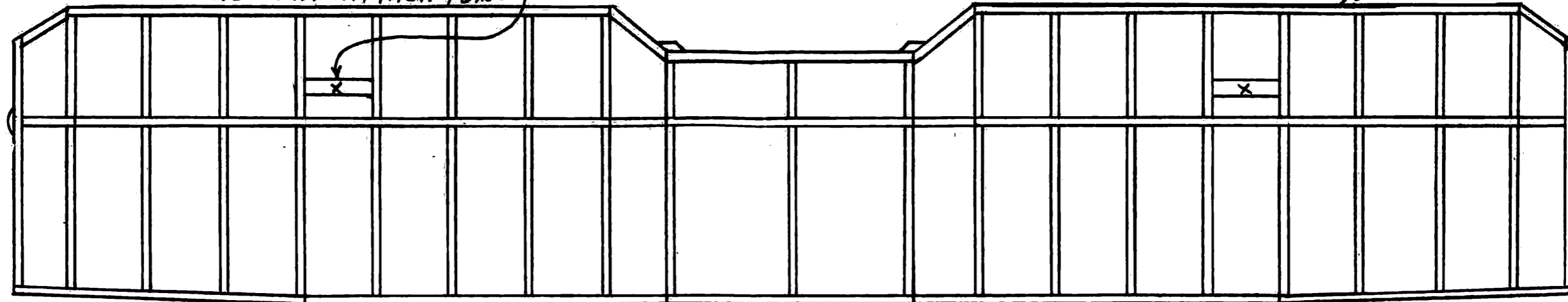


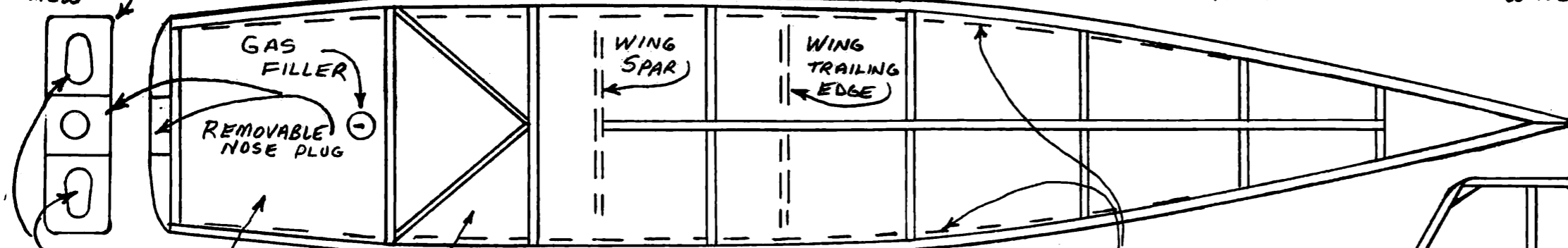
WING STRUT ATTACH POINT

FOR INDOOR LEFT TURN, WASH OUT RIGHT WING TIP  $3/32"$  FOR FLAT TURNS



NOSE  
DETAIL FRONT  
VIEW

$3/8"$  DIHEDRAL EACH WING TIP



AIR INTAKES

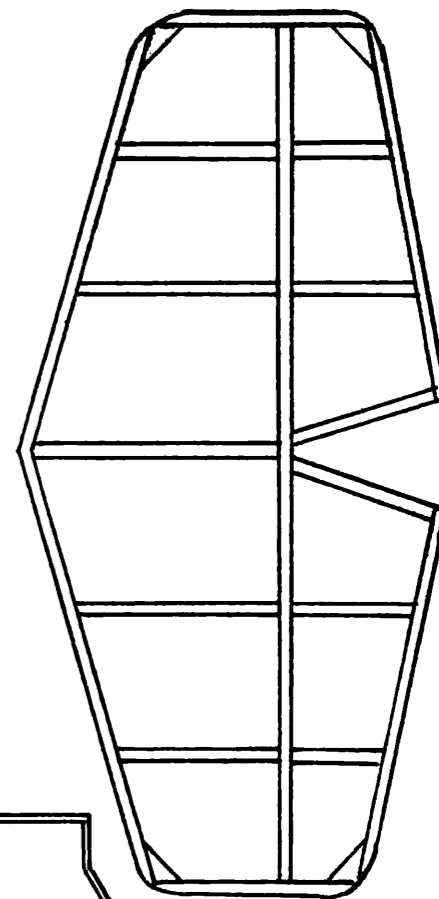
LOWER FUSELAGE  
NARROWER THAN TOP

$1/32$  SHEET

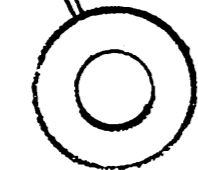
$1/16$  SHEET

WING  
STRUT

HORIZONTAL  
STAB SHOWN  
CROSS HATCHED



COVER  
LANDING GEAR  
WIRE WITH PAPER  
FARING



EAVES COUGAR\*  
BY  
PERRY PETERSON

REF:  
FEB/MAR 1963  
AIR PROGRESS

.020 WIRE  
LANDING GEAR  
PATTERN

USE THE PECK-POLYMERS NESMITH COUGER\* KIT MATERIALS  
FOR A QUICK, EASY CONVERSION.

\*INTENTIONAL SPELLING VARIANT