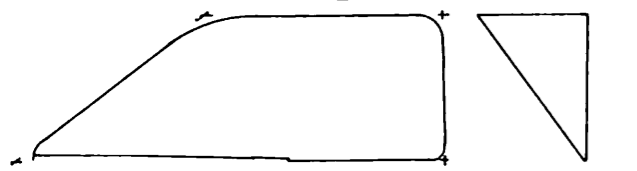


Pylon cap thin alum. st., epoxy in place.

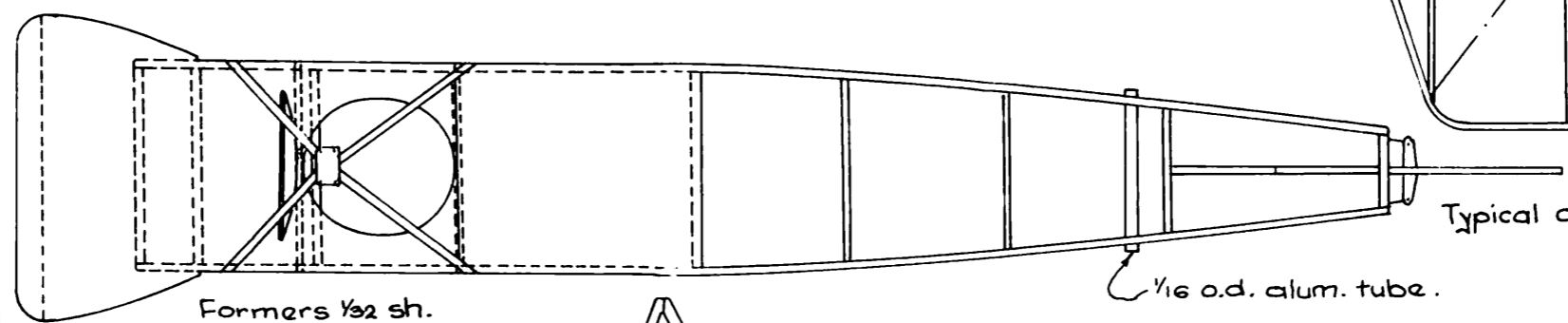
Typical Wing Rib  $\frac{1}{64}$  sh.  
 Wing L.E.  $\frac{1}{16}$  sq.  
 T.E.  $\frac{1}{32} \times \frac{1}{16}$   
 Spars  $\frac{1}{32}$  sq.  
 Tips 2 laminations  $\frac{1}{32} \times \frac{1}{16}$

Tail surfaces & ailerons outlines 2 laminations  $\frac{1}{64} \times \frac{1}{32}$  basswood.  
 Ribs  $\frac{1}{32}$  sh. &  $\frac{1}{32}$  sq.  
 Note elevators and ailerons are interchangeable. Attach with soft wire.



Pitch @ tip

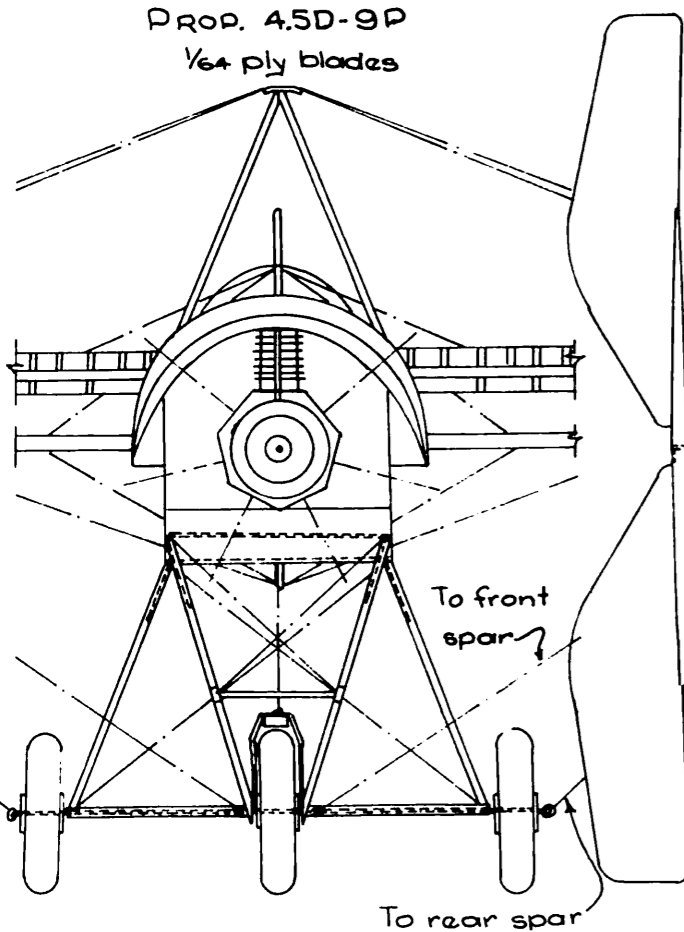
PROP. 4.5D-9P  
 $\frac{1}{64}$  ply blades



Formers  $\frac{1}{32}$  sh.

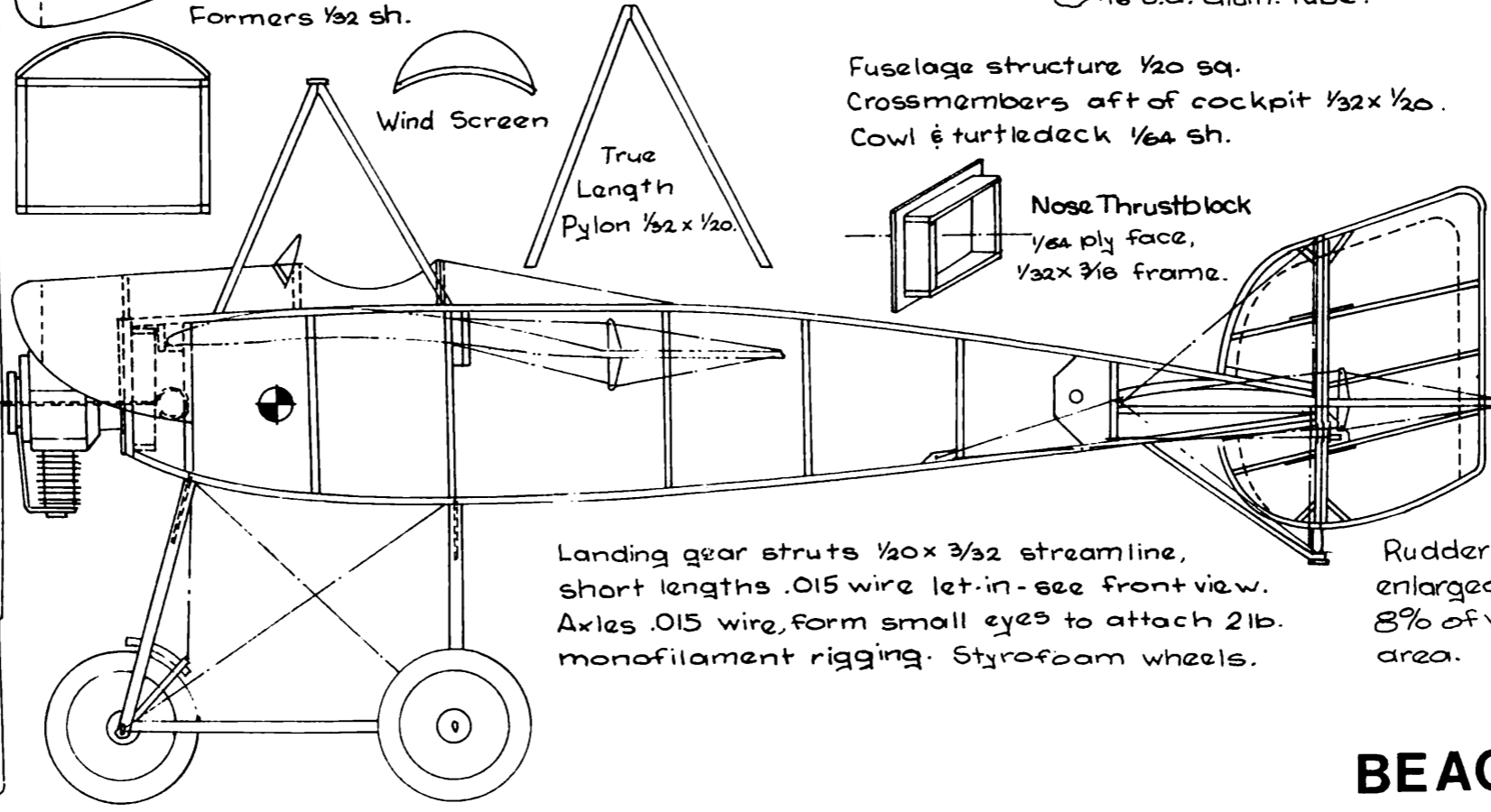
Typical control horn  $\frac{1}{64}$  ply.

$\frac{1}{16}$  o.d. alum. tube.



To front spar

To rear spar



Wind Screen

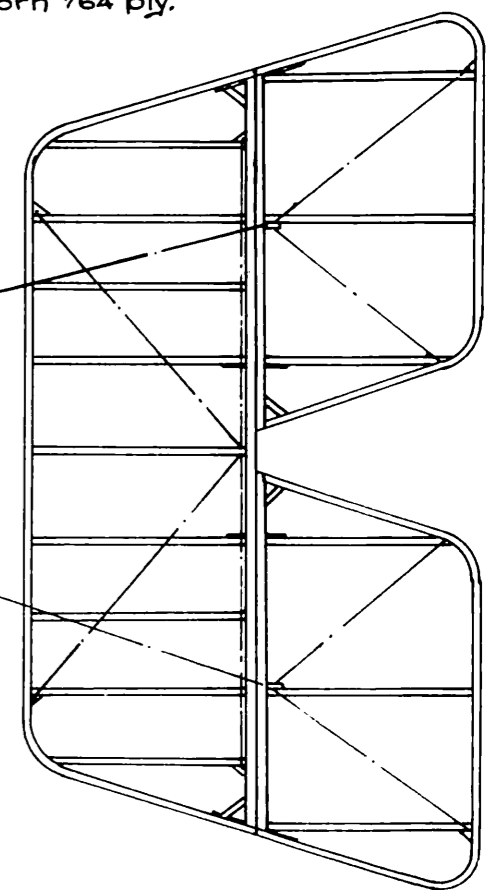
True Length  
 Pylon  $\frac{1}{32} \times \frac{1}{20}$ .

Fuselage structure  $\frac{1}{20}$  sq.  
 Crossmembers aft of cockpit  $\frac{1}{32} \times \frac{1}{20}$ .  
 Cowl & turtledeck  $\frac{1}{64}$  sh.

Nose Thrustblock  
 $\frac{1}{64}$  ply face,  
 $\frac{1}{32} \times \frac{3}{16}$  frame.

Landing gear struts  $\frac{1}{20} \times \frac{3}{32}$  streamline,  
 short lengths .015 wire let-in - see front view.  
 Axles .015 wire, form small eyes to attach 2lb.  
 monofilament rigging. Styrofoam wheels.

Rudder shown enlarged to 8% of wing area.



# BEACHEY MONOPLANE

PEANUT SCALE  $\frac{1}{2}''=1'$