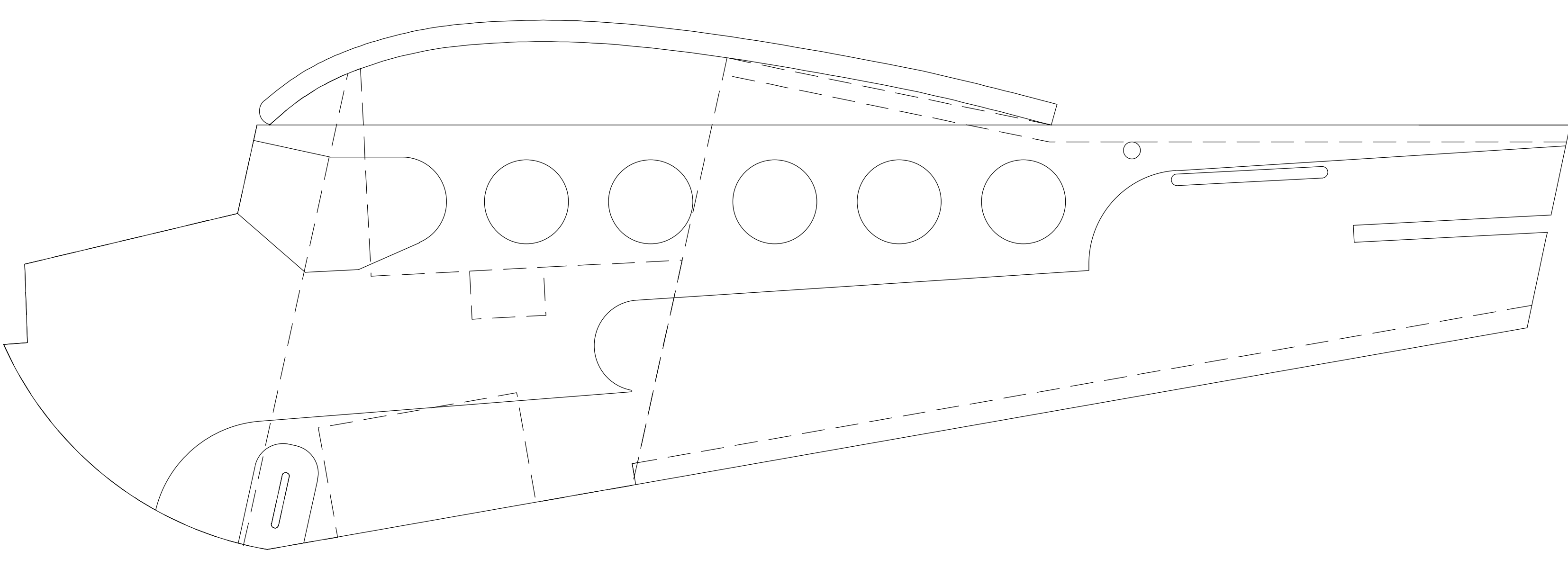
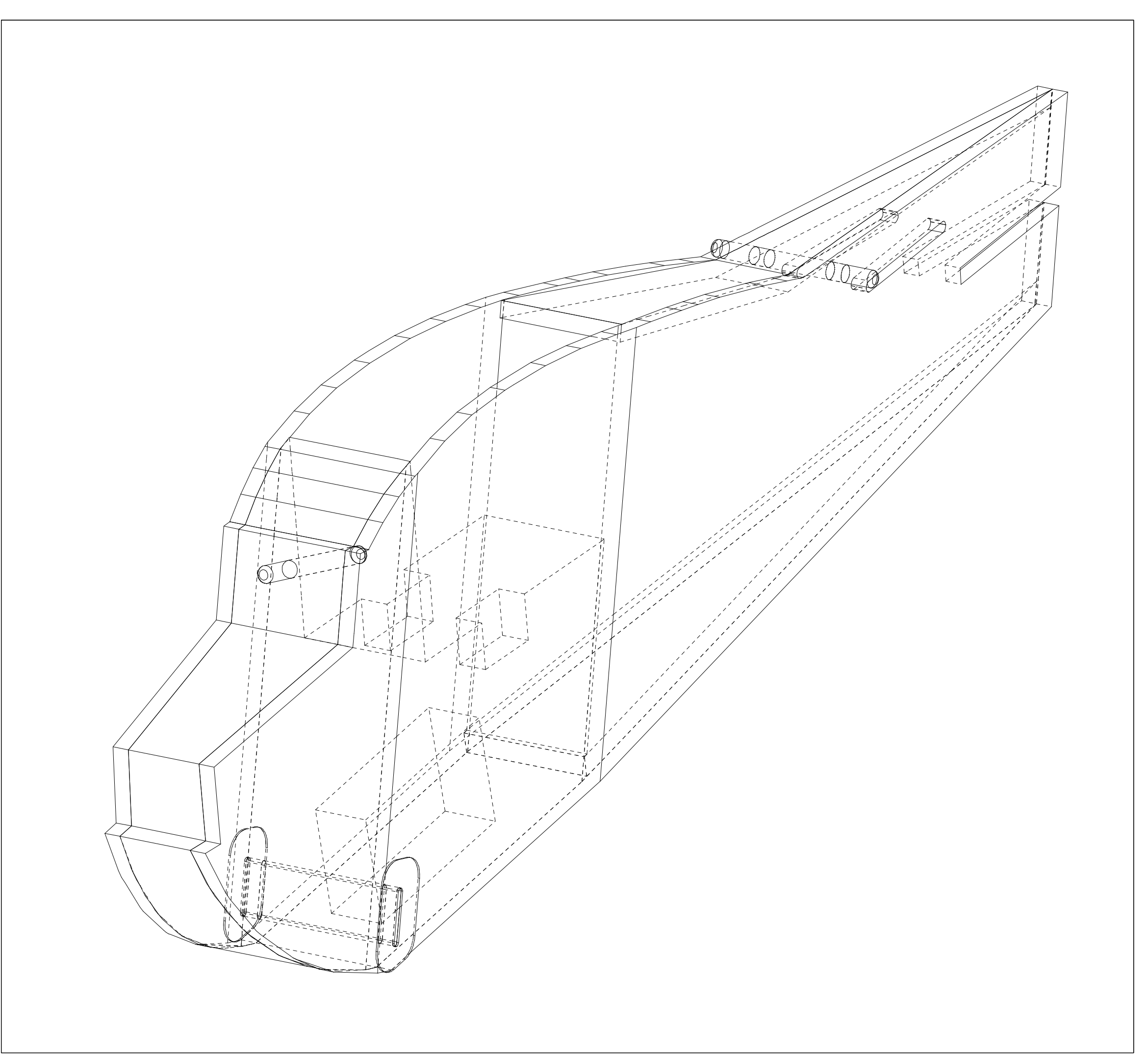
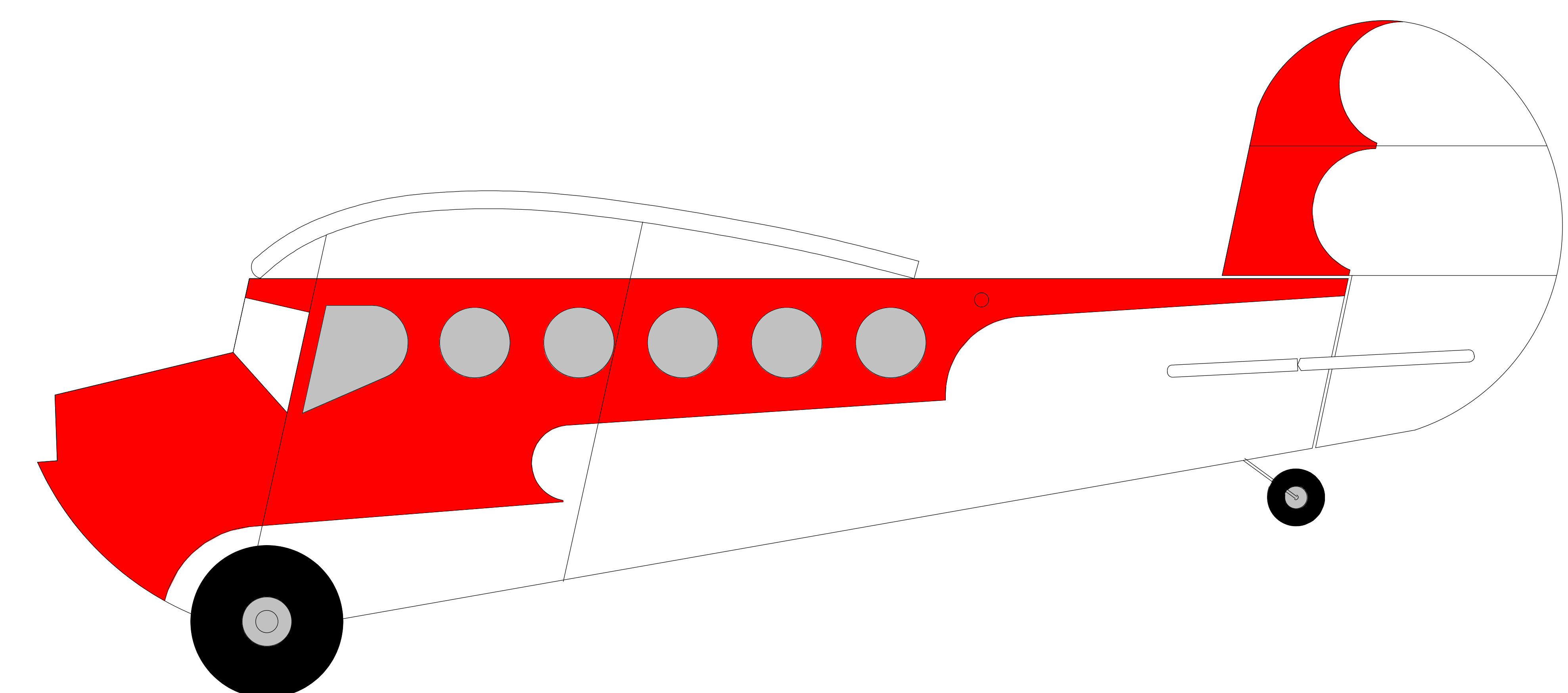
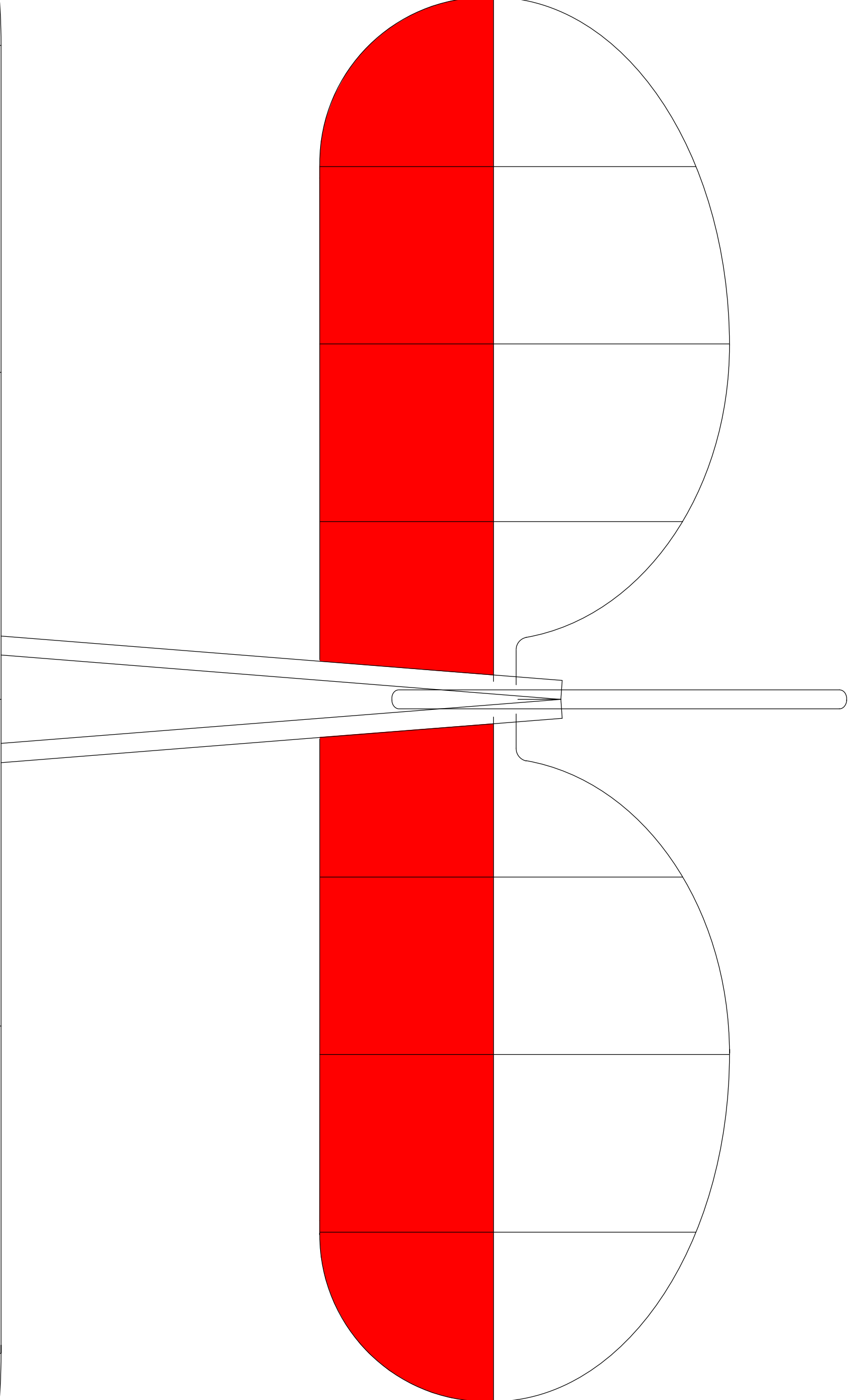
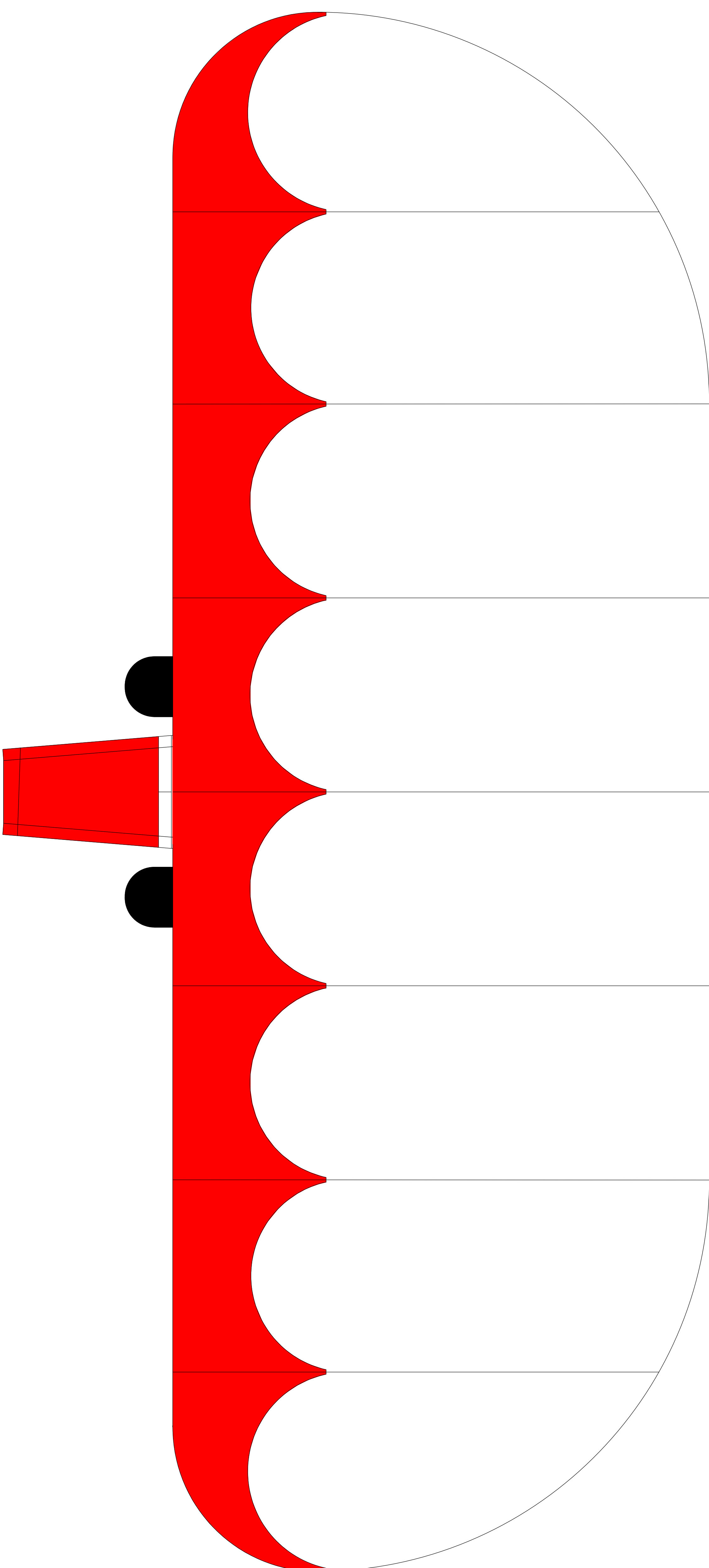
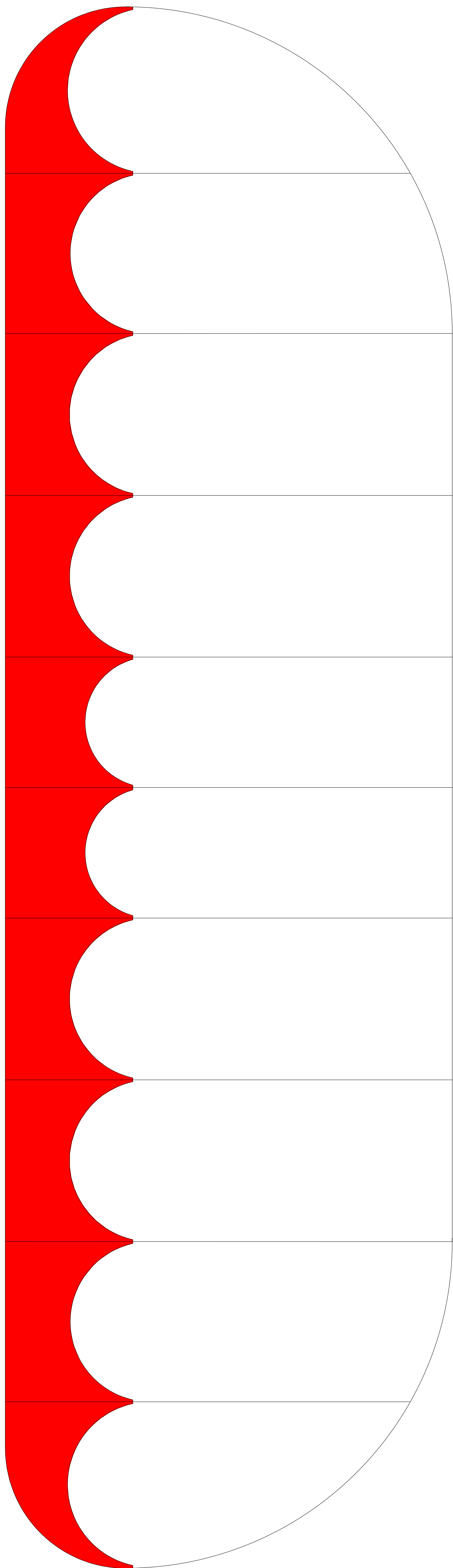
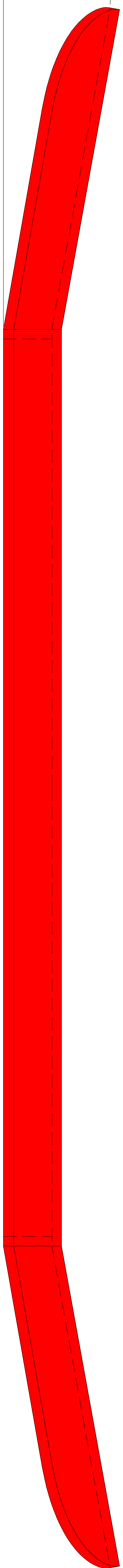
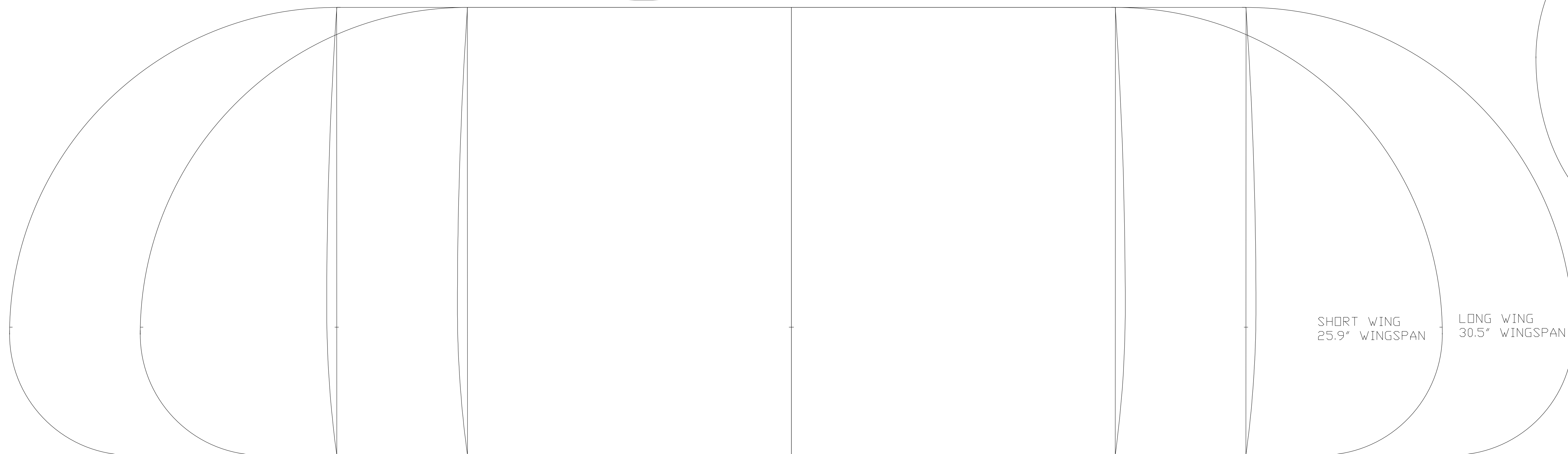
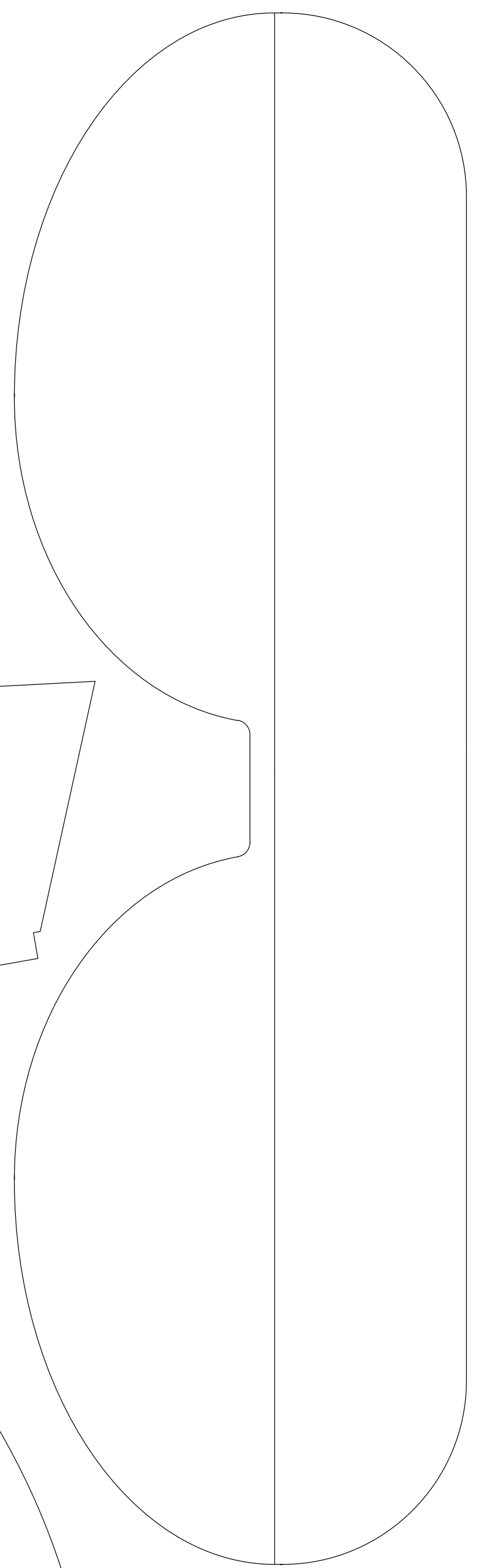
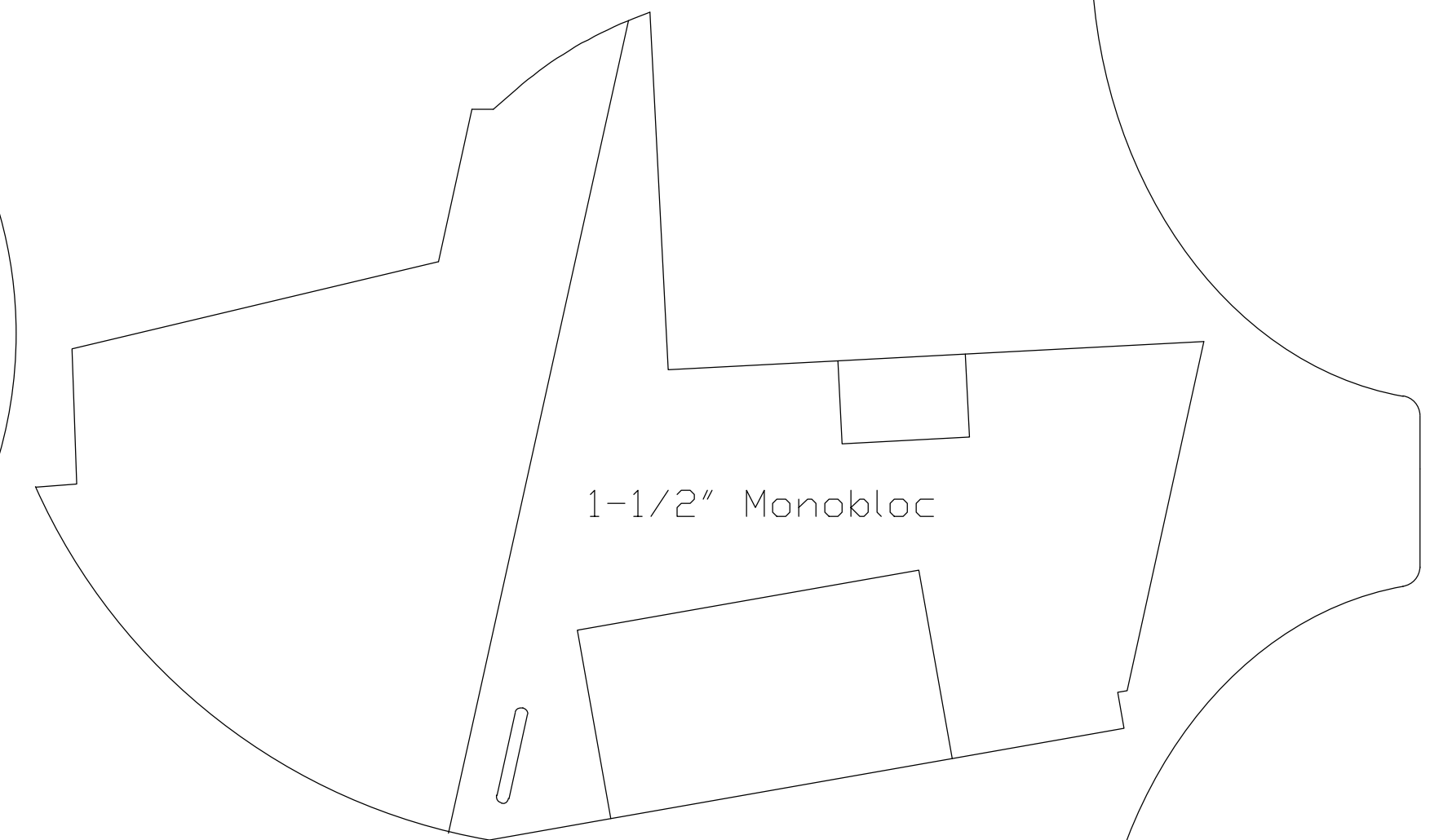
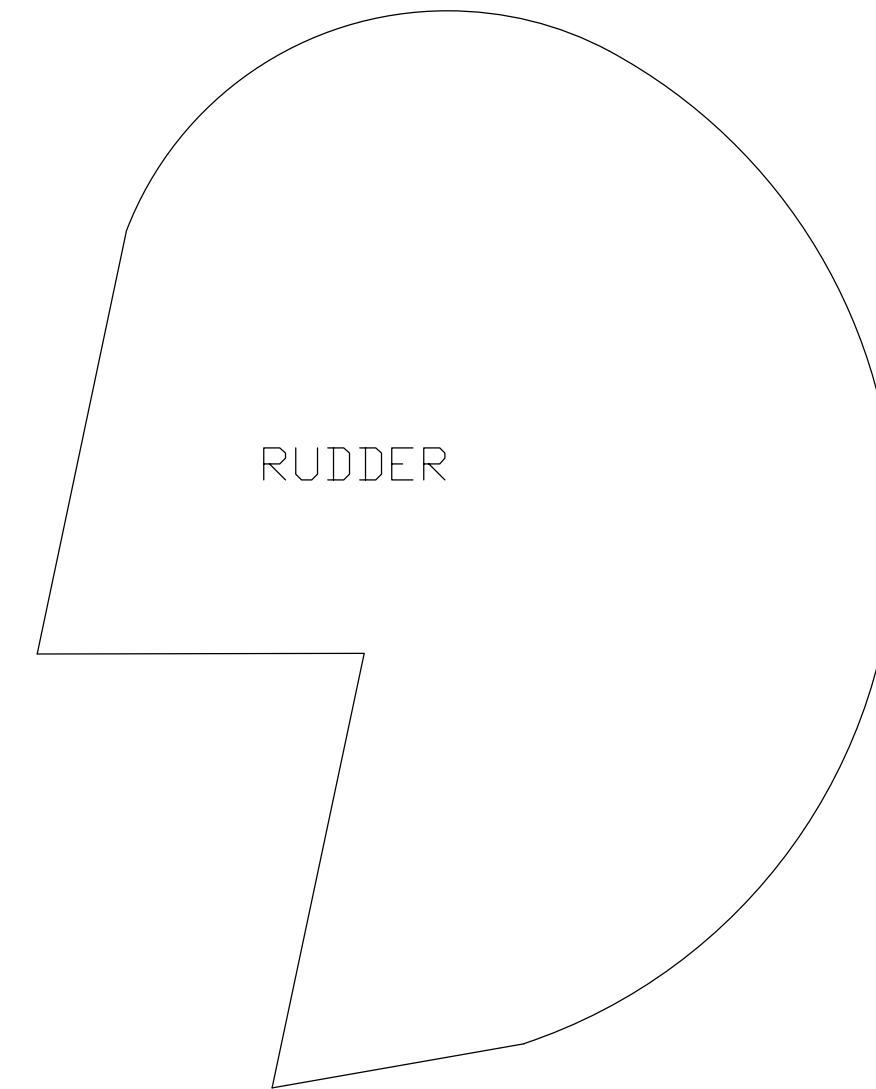
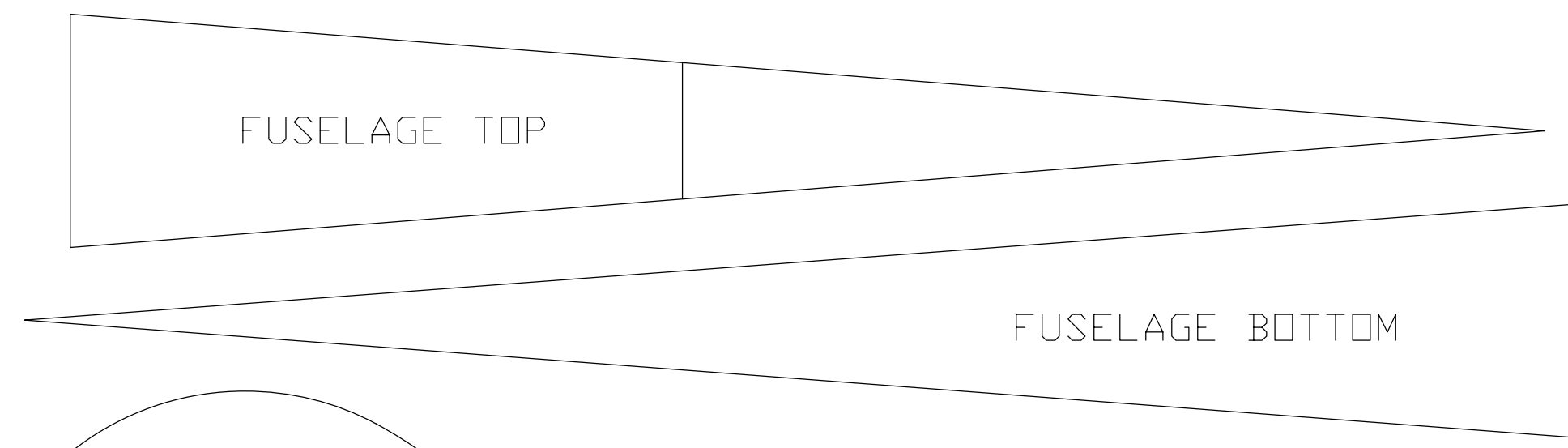
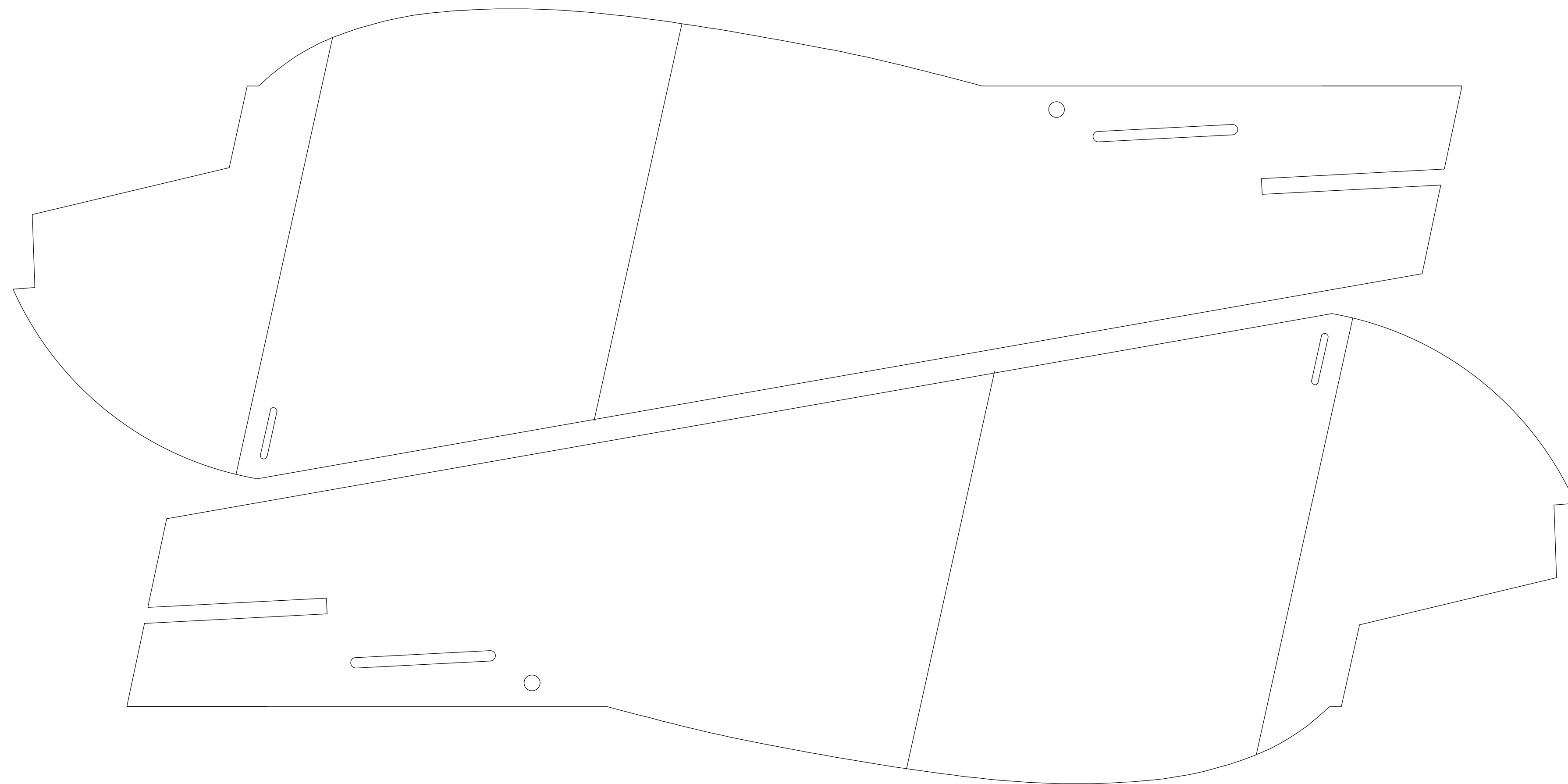


2.09



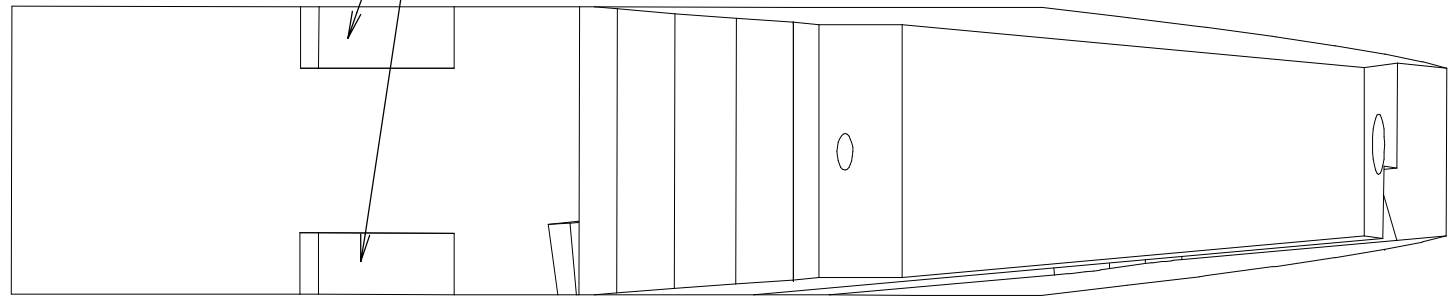


Blazy Bee
30.5" Wingspan (preffered)
All commercial rights reserved
by dzisfb (Ken)
All parts FFF Protection Board
unless noted otherwise.

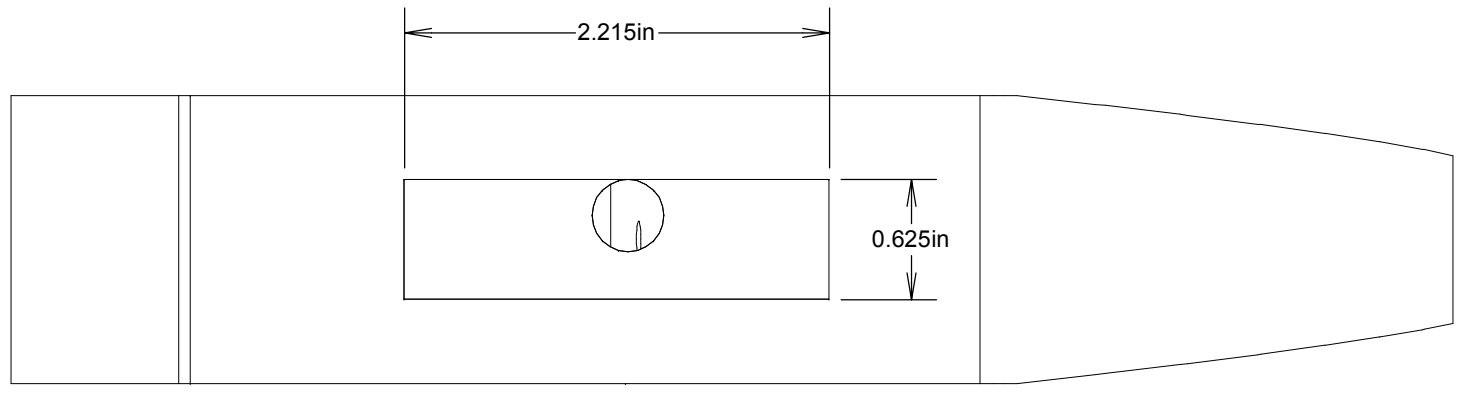
B

A

SERVO POCKETS SIZED FOR BLUE ARROW BA-TS-3.6BB



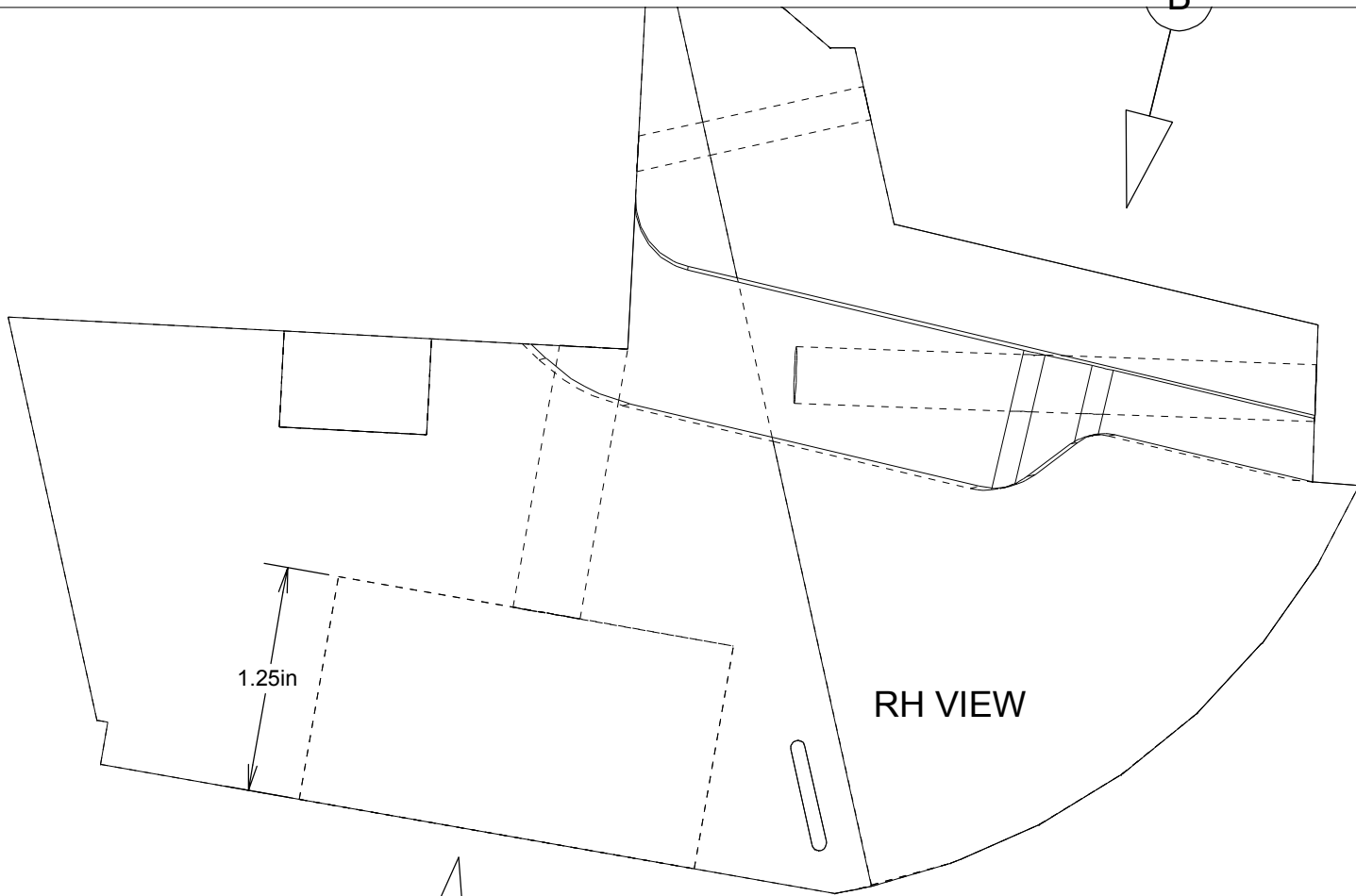
VIEW IN DIRECTION OF ARROW "B"



VIEW IN DIRECTION OF ARROW "A"

4

3



1.25in

RH VIEW

A

B

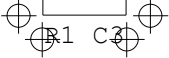
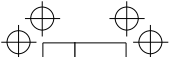
Ken's CAD Designs

TITLE
BLAZY BEE MONOBLOC DETAIL

| | | | |
|------------------|-------------|---------------------------------|------------|
| SIZE C | CAGE CODE | DWG NO dz1sfb @ RCGroups.com | REV REL |
| SCALE 1:1 | 16-MAR-2008 | SHEET SHEET 1 OF 1 | |

2

1

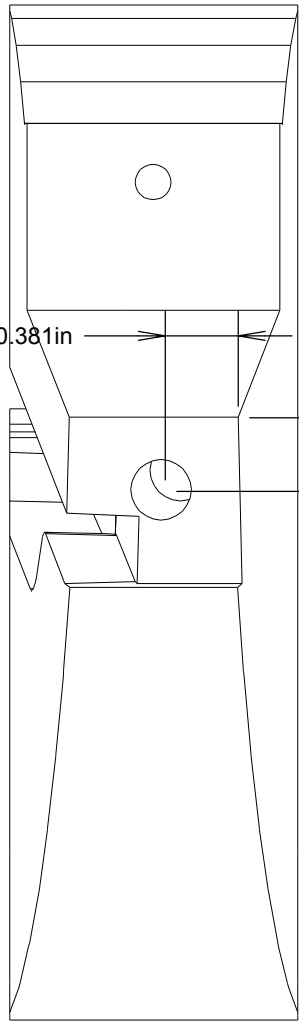


E

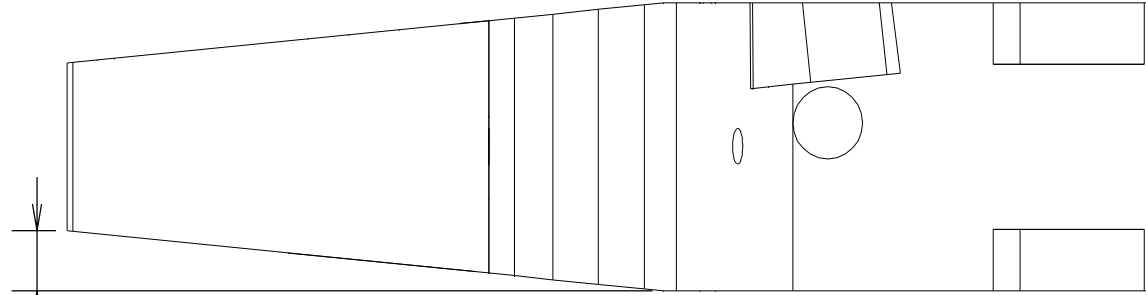
A

EL

C1



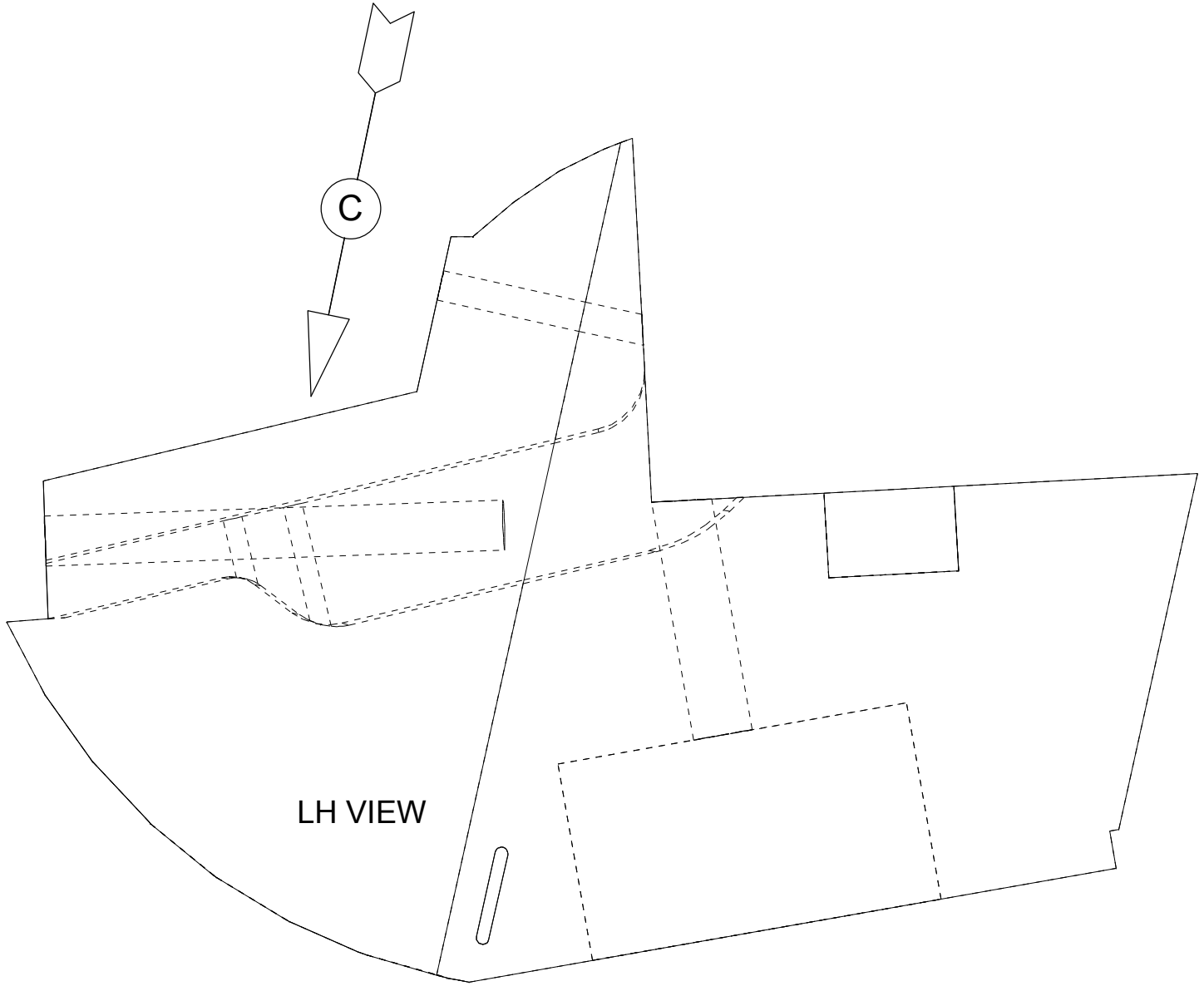
FRONT VIEW



VIEW IN DIRECTION OF ARROW "C"

D

C

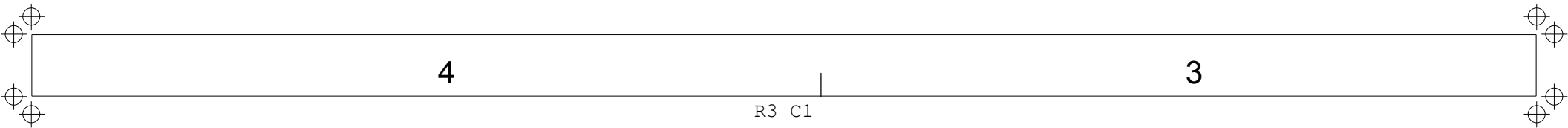


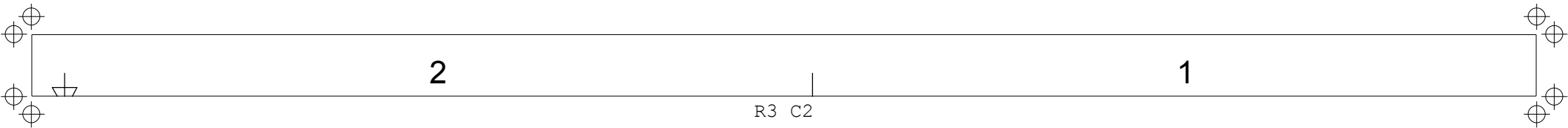
LH VIEW

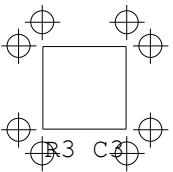
C

B

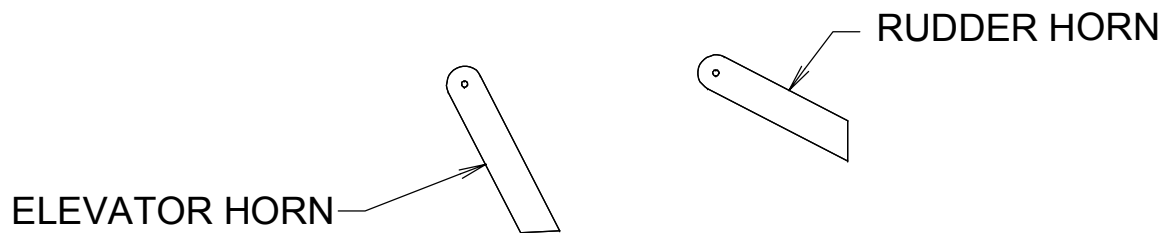
R2 C2





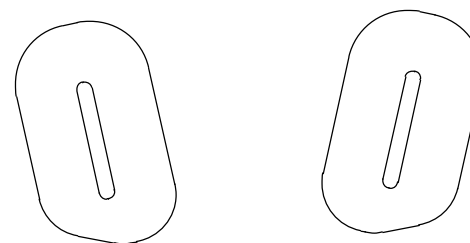
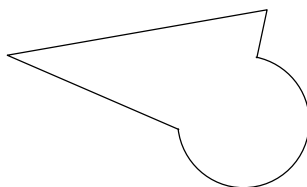


HORNS CONSTRUCTED FROM 1/16" PLY



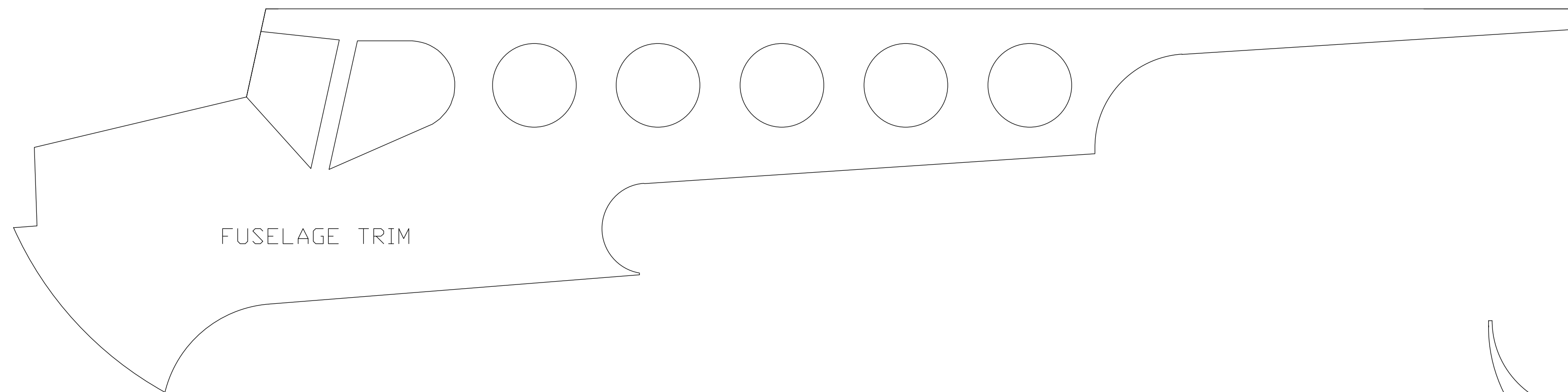
RUDDER AND ELEVATOR HORNS
PASS THROUGH TO FLUSH ON
OPPOSITE SIDE OF RESPECTIVE
CONTROL SURFACE

TAIL SKID - BLUCOR FFF

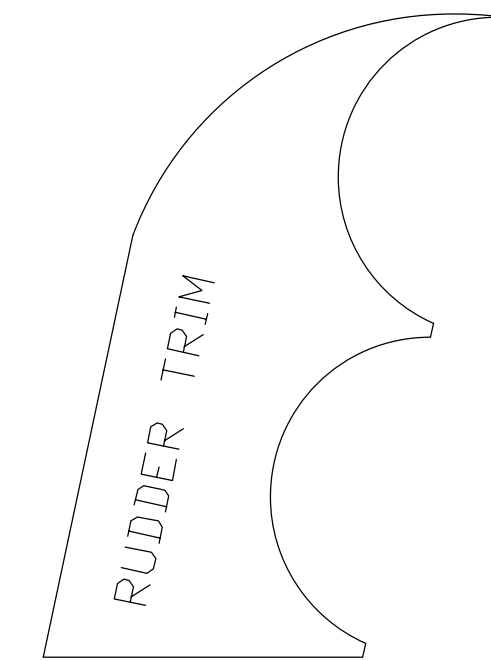


LANDING GEAR SLOT REINF.
MAKE FROM CREDIT CARD STOCK

| | | | | | |
|--|--|--|-----------|-------------|--------------|
| | | TITLE | | | |
| | | BLAZY BEE PARTS CONTROL HORNS LG REINFORCEMENTS TAIL SKID | | | |
| CHG A - ADDED LG REINF PLATES TO DRAWING - 16/AP/08 | | SIZE A | CAGE CODE | DWG NO | REV A |
| | | SCALE | 1:1 | 22-MAR-2008 | SHEET 1 OF 1 |



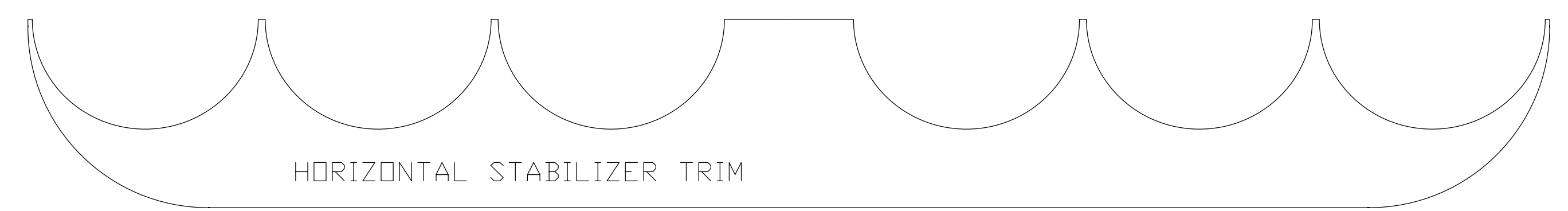
FUSELAGE TRIM



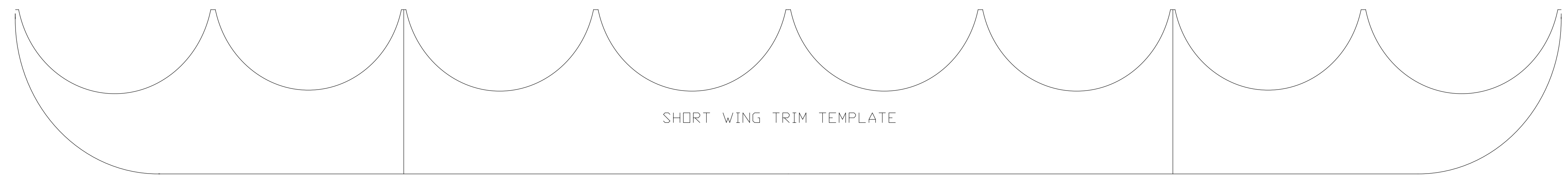
RUDDER TRIM

Trim Templates for Blazy Bee
by Dz1sfb (Ken) @ RCGroups.com
For personal use only, all
commercial rights reserved.

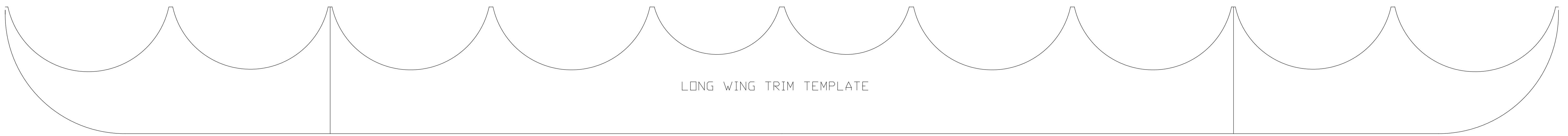
Revision B - Horizontal Stab added



HORIZONTAL STABILIZER TRIM



SHORT WING TRIM TEMPLATE



LONG WING TRIM TEMPLATE